

## Accessing network printers on Mac

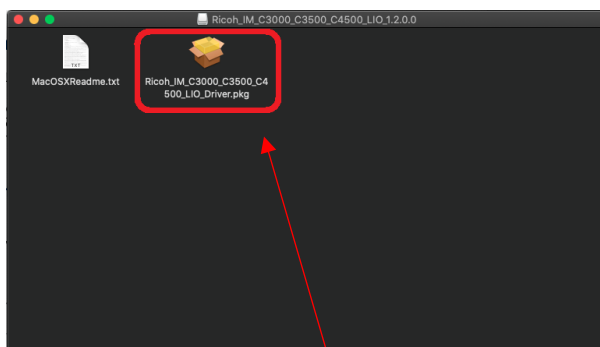
To add the printers successfully you must be connected to the eduroam network. Download the driver from <https://www.strath.ac.uk/professionalservices/is/help/indepth/print/>.



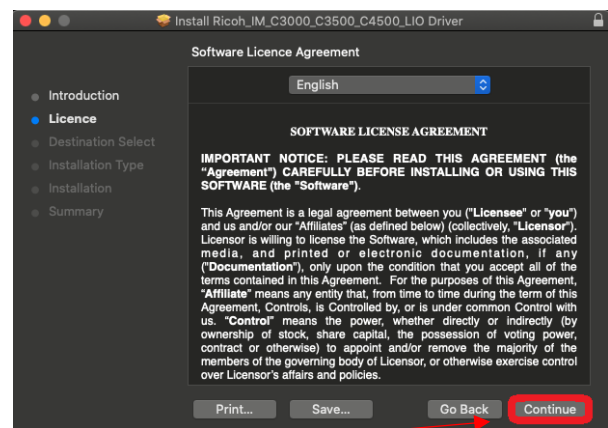
1. On the [In Depth Print webpage](#), click on Print driver for Mac.

2. Once the download is complete, click on the Downloads icon.

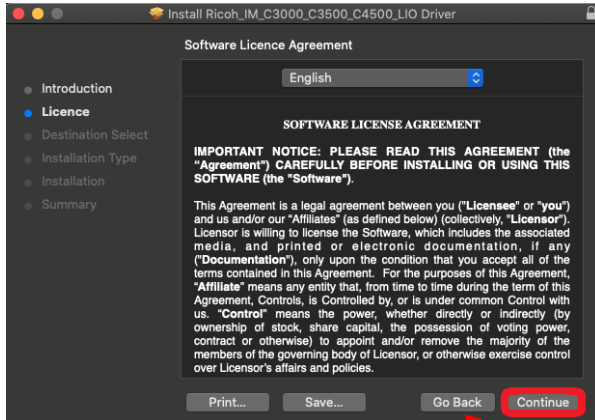
3. In the drop-down menu, double-click on Ricoh\_IM\_C3000\_C35...C4500\_LIO\_1.2.0.0.dmg



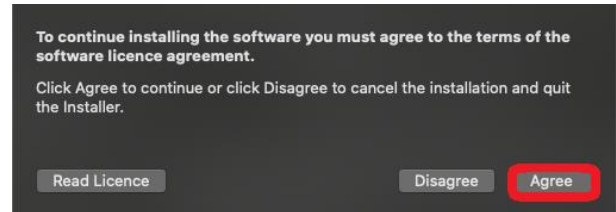
4. Double-click on Ricoh\_IM\_C3000\_C3500\_C4500\_LIO\_Driver.pkg.



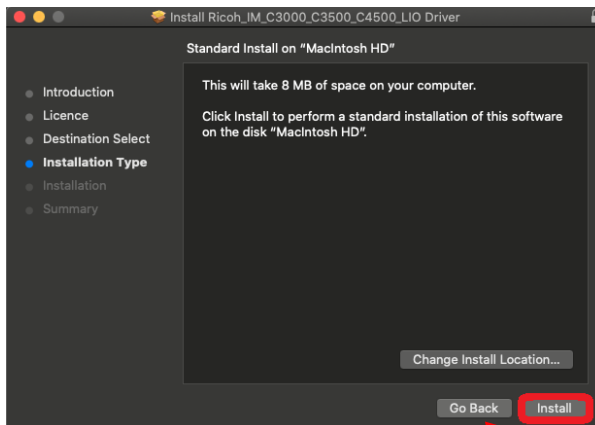
5. In the print driver installation wizard, click on Continue.



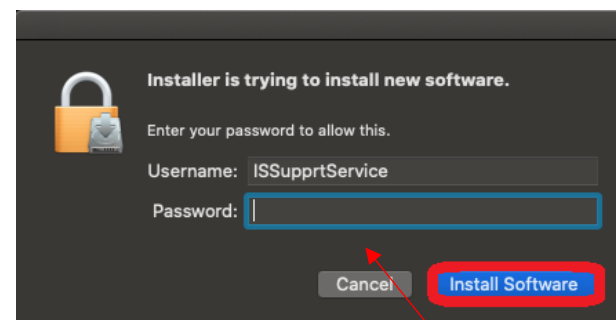
6. Click on Continue.



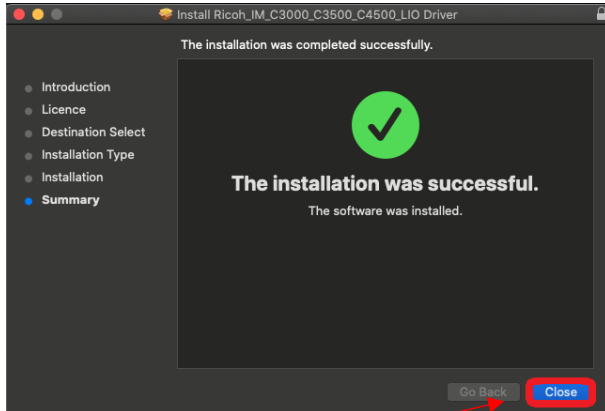
7. In the pop-up box that appears, click on Agree.



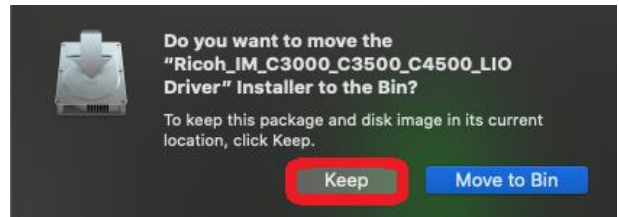
8. Click on Install.



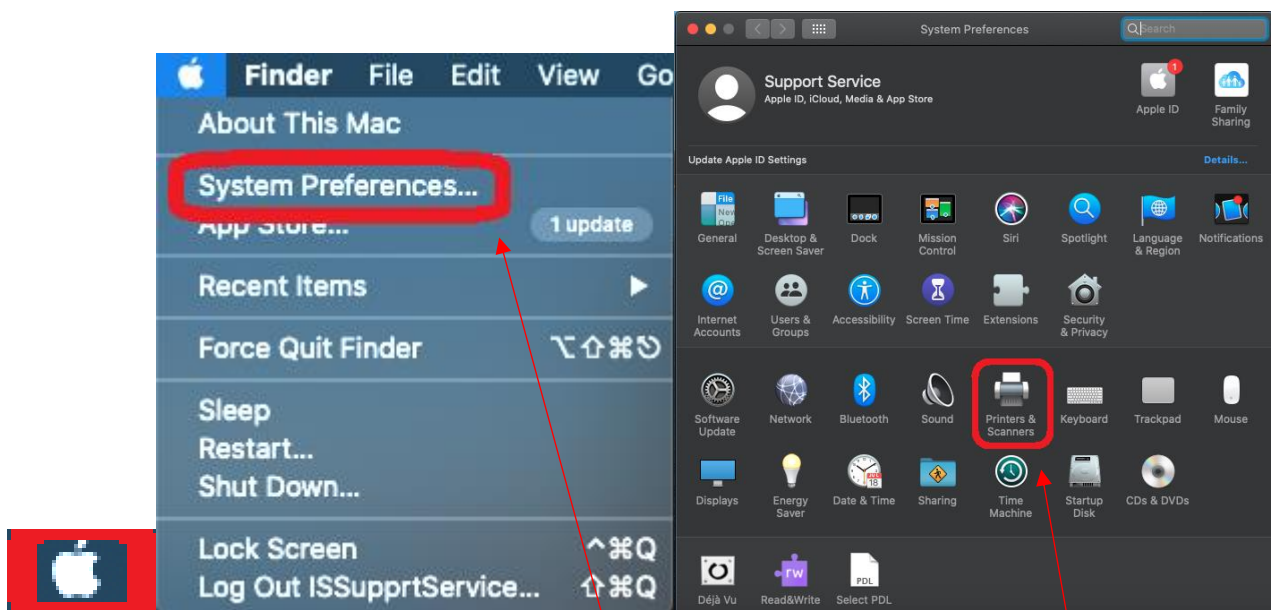
9. You may be asked to enter your macbook password. If so, enter it, then click on Install Software.



10. Click on Close.



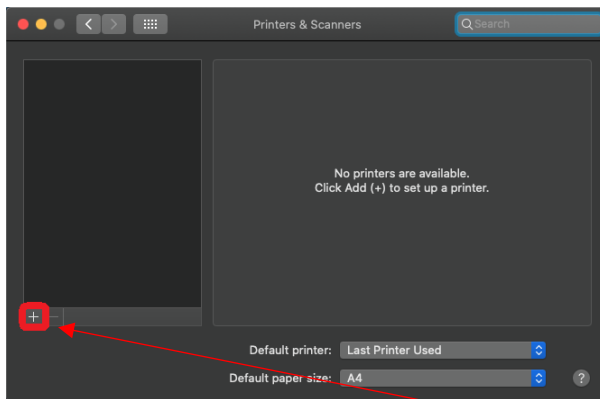
11. Click on Keep.



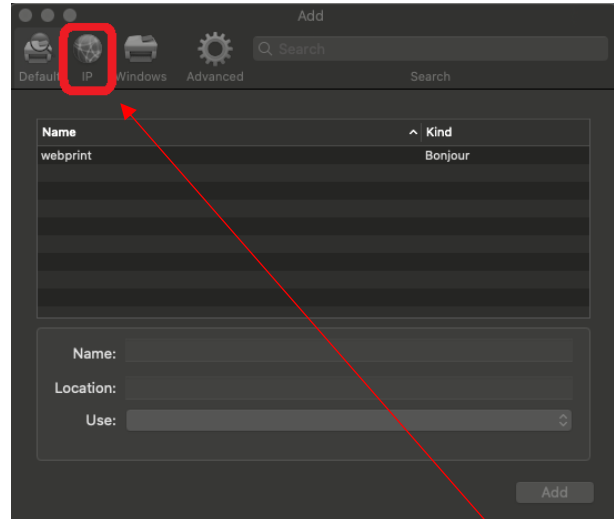
12. In the Finder menu, click on the Apple icon.

13. In the drop-down menu, click on System Preferences....

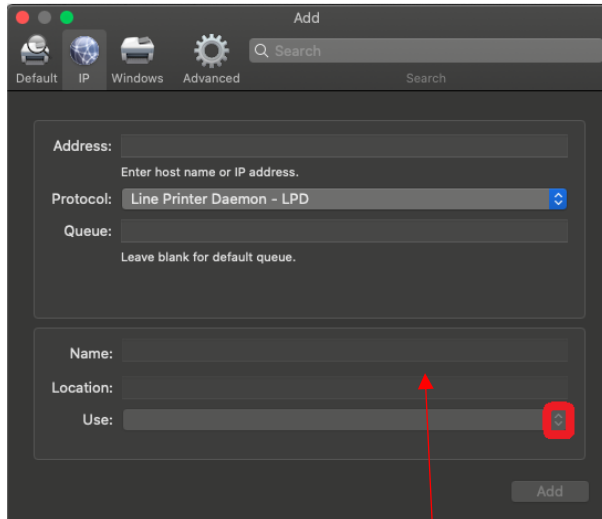
14. Double-click on Printers & Scanners.



15. In the Printers & Scanners window, click on the + icon.



16. In the Add window, click on the IP tab.



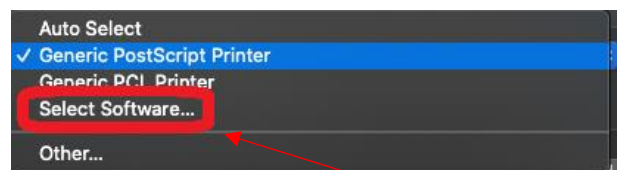
17. Where it says Address, enter your username followed by @its-printstud.ds.strath.ac.uk. For example, [bsb09111@its-printstud.ds.strath.ac.uk](mailto:bsb09111@its-printstud.ds.strath.ac.uk).

Where it says Protocol, ensure it says Line Printer Daemon (DPD).

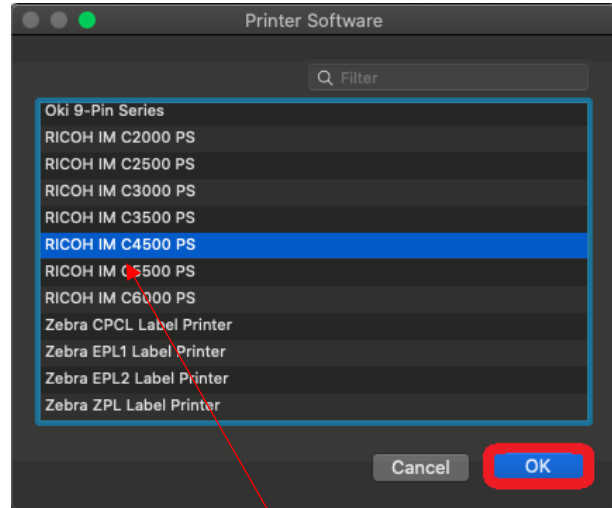
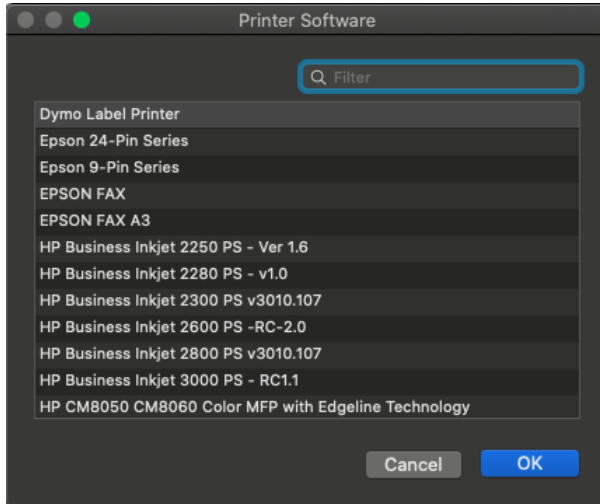
Where it says Queue, enter A4\_B&W.

Where it says Name, enter a name which will identify it to you as the university printers.

Where it says Use, click on the drop-down button.

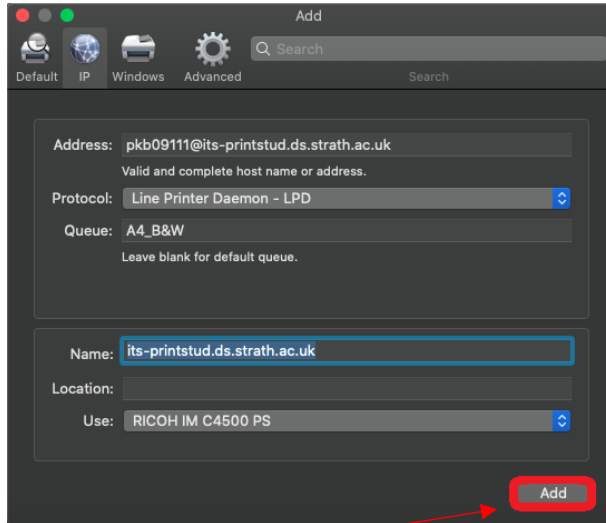


18. In the drop-down menu, click on Select Software....



19. In the Print Software window, scroll down.

20. Select RICOH IM C4500 PS, then click on OK.



21. Click on Add.

Prints will default to colour and one-sided.



22. If you want to change your print from colour to black-and-white, at the display on the MFD, select Force greyscale.

If you want to change your print from one-sided to two-sided, select Force 2-sided.

Then select Print.

Was this information helpful?

## CONTACT US

**Email:** [help@strath.ac.uk](mailto:help@strath.ac.uk) **Call:** 0141 548 4444