



Global  
Entrepreneurship  
Monitor



# GEM Scotland Report 2012

6 June 2013

## Introduction

**Professor Eleanor Shaw**

Hunter Centre for Entrepreneurship  
University of Strathclyde Business School

# Hunter Centre for Entrepreneurship



## Mission

To provide excellent teaching that motivates and equips students to engage in entrepreneurial behaviours and to be influential in the development of best practices in entrepreneurship education

To produce research of high academic quality that is influential and relevant to policy and practice

To engage in useful knowledge exchange with enterprises whereby best practices can be both shared with and informed by industry partners

*Global Entrepreneurship Monitor  
Scotland 2012*



**Professor Jonathan Levie**  
Hunter Centre for Entrepreneurship  
University of Strathclyde



# **GEM Scotland Report 2012**



## **Contents**

**Entrepreneurial Attitudes, Activity and Aspirations**

**Scotland's Innovation-based Entrepreneurship Ecosystem**

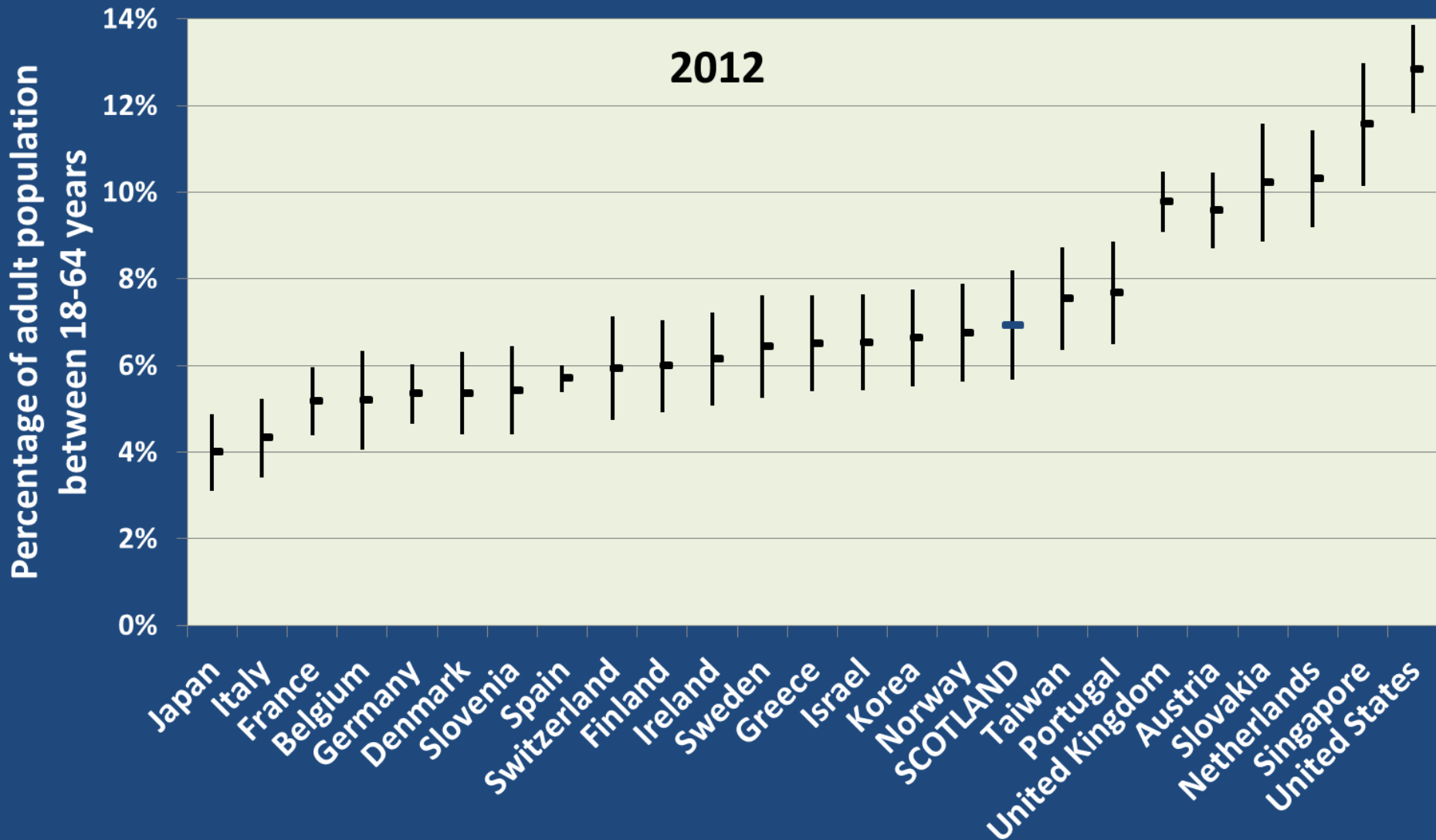
**Migrant and Ethnic Entrepreneurship**

**Entrepreneurship and Education**

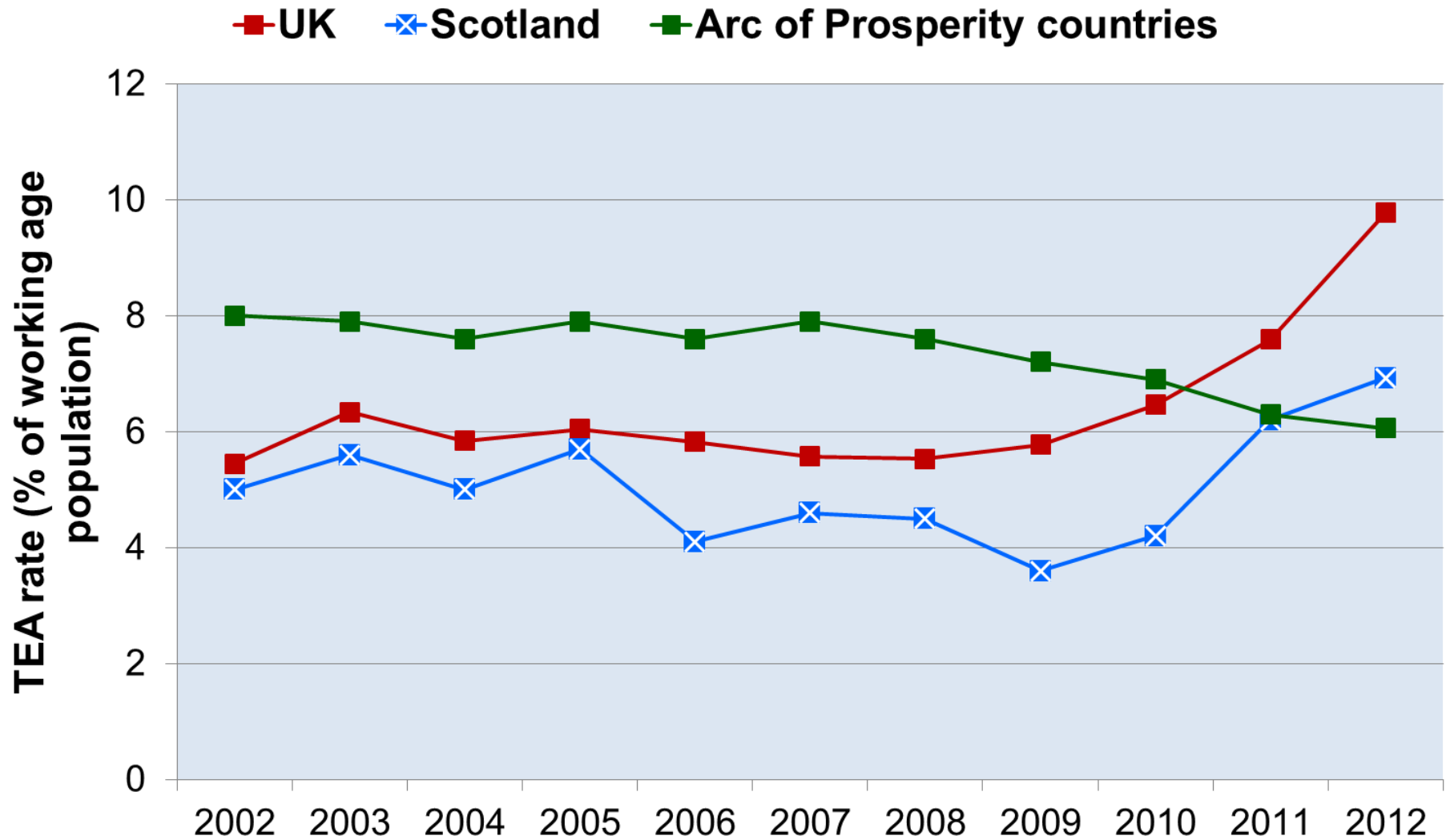
**Entrepreneurship Policy and Programmes Review**

**GEM and Entrepreneurship Policy in Scotland**

# Total Early-stage Entrepreneurial Activity (TEA): How Scotland compared to other innovation- driven economies in 2010, 2011 and 2012



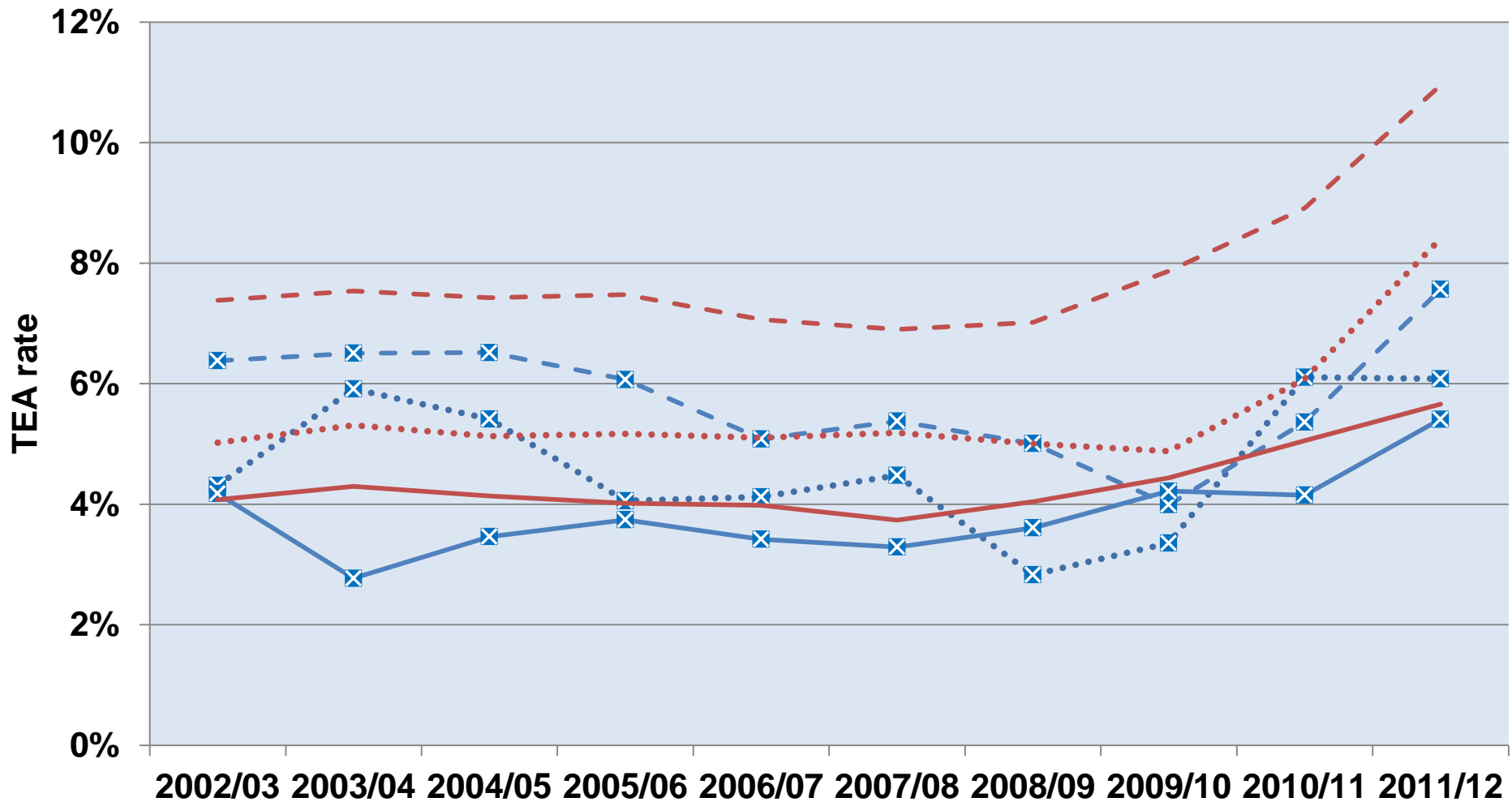
# TEA rates in Scotland, UK and AOP countries 2002 to 2012



# A gap in activity in the 30 to 49 age group between Scotland and the UK



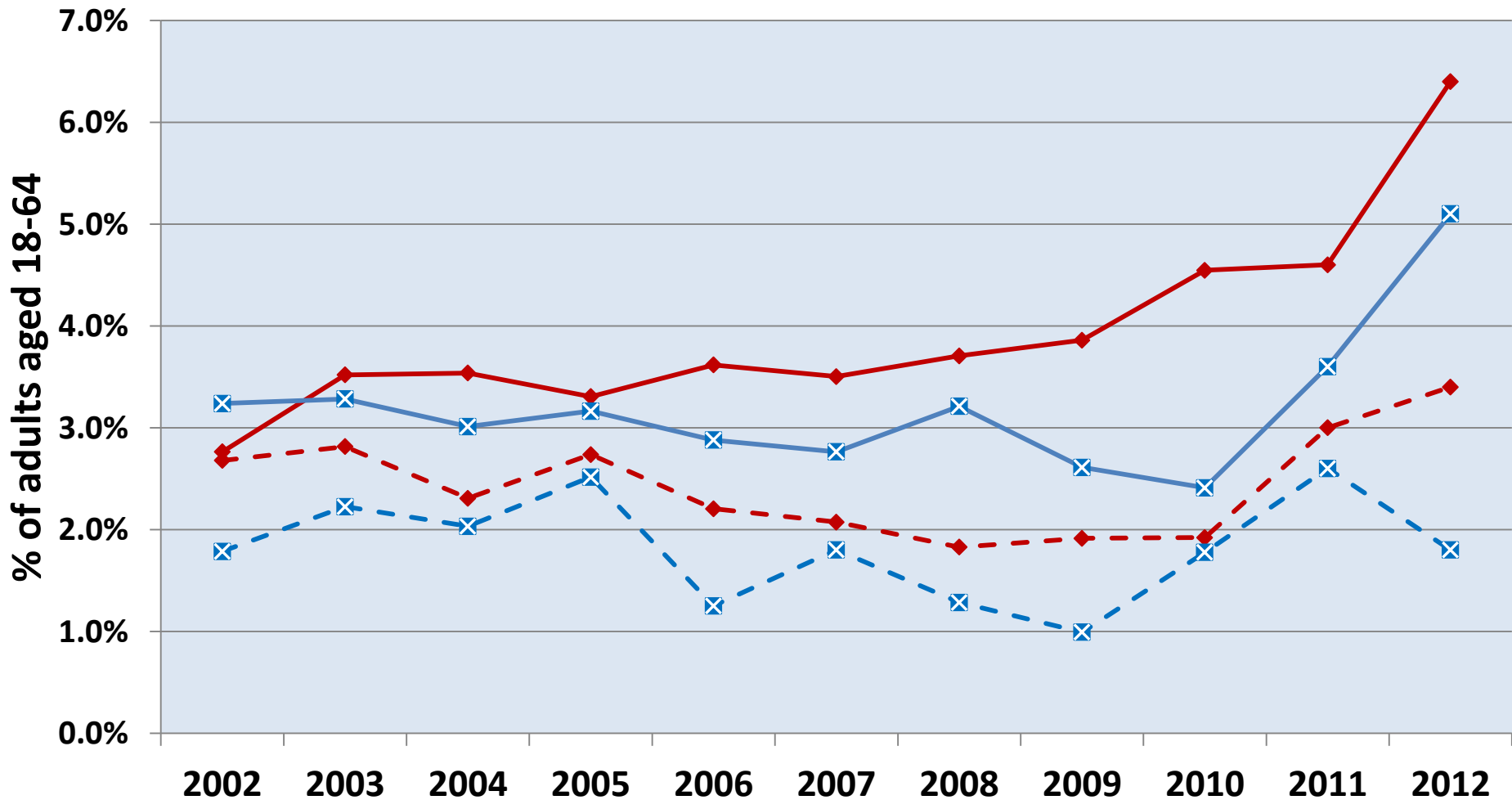
- Scotland age 18 to 29
- Scotland age 30 to 49
- Scotland age 50 to 64
- UK age 18 to 29
- UK age 30 to 49
- UK age 50 to 64



# Solo/Low versus Medium/High Job Expectation early-stage Entrepreneurial Activity in the UK and Scotland



—◆— SLEA UK    —×— SLEA Scotland    -◆- MHEA UK    -×- MHEA Scotland

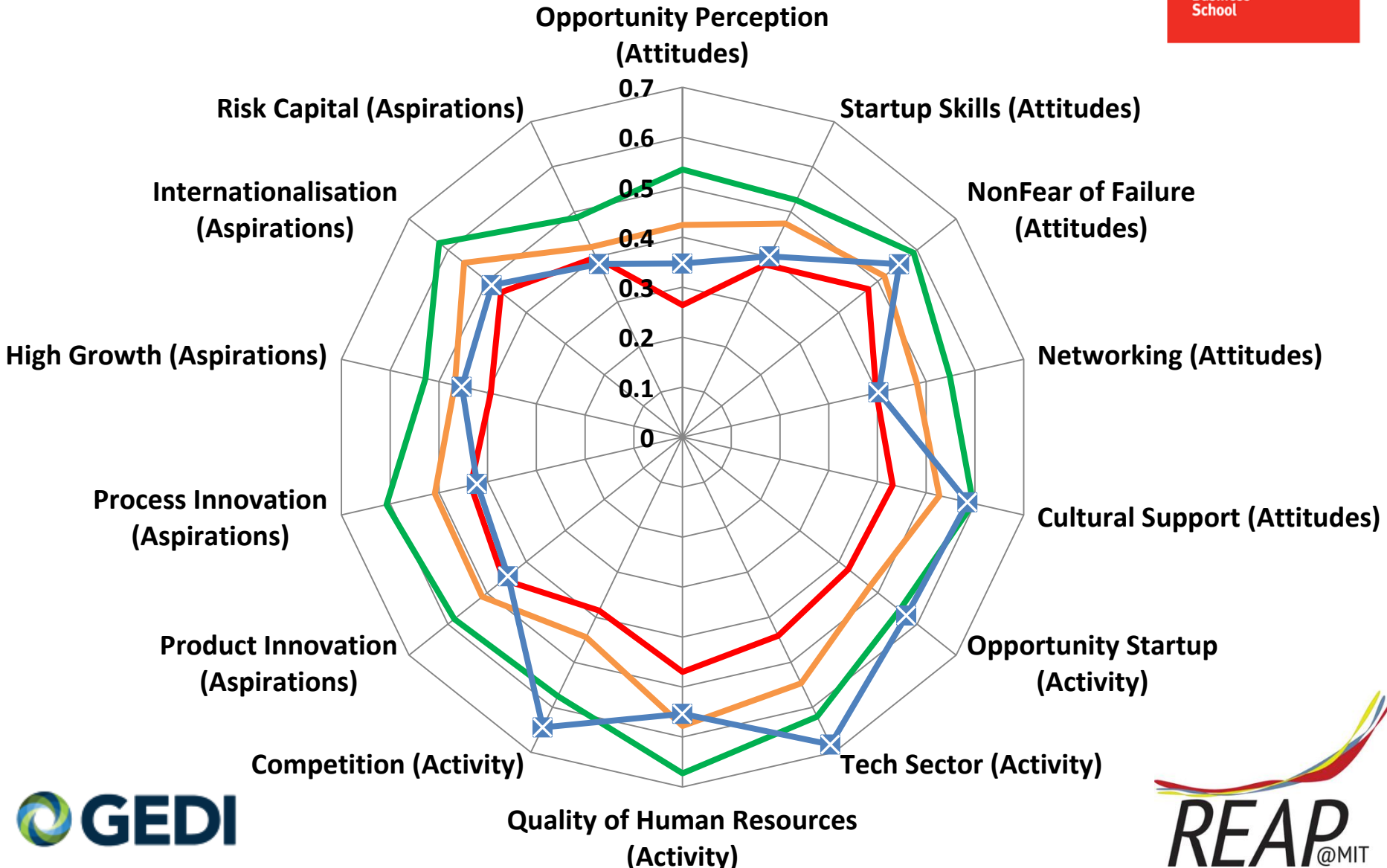




# Scotland's innovation-based entrepreneurship ecosystem vs. 27 innovation-driven nations



— Lower Quartile    — Median    — Upper Quartile    —x— Scotland



# TEA rates by migrant status and household income

		UK	Scotland	Scotland as % of UK rate	
Migrant status	Household income	TEA rate	TEA rate	% of sample	% of TEA entrepreneurs
Life-long resident	Low	3.2	3.8	115	167
	Medium	4.6	4.1	115	125
	High	7.5	6.2	128	127
Regional In-migrant	Low	5.1	3.3	121	96
	Medium	6.6	5.1	99	93
	High	8.9	8.2	81	90
Immigrant	Low	7.7	5.7	43	38
	Medium	8.8	8.7	49	59
	High	9.9	13.3	45	73

# TEA rates in Scotland and UK by migrant status and age group, combined 2003 to 2012 database

Nation of birth	Scotland			England	Not UK	Scotland	England	Any
	Scotland			Scotland	Scotland	England	England	All UK
Nation of residence	Scotland			Scotland	Scotland	England	England	All UK
Migrant status	All	Life-long resident	Regional In-migrant	Regional In-migrant	Immigrant	All		
age 18 to 30	4.2	4.7	3.6	6.9	5.3	4.8	4.9	5.3
age 30 to 49	5.1	4.8	5.7	8.4	9.8	8.1	7.3	7.5
age 50 to 64	3.2	2.6	3.7	7.5	11.0	5.1	4.1	4.2
<b>Total</b>	<b>4.3</b>	<b>4.2</b>	<b>4.6</b>	<b>7.8</b>	<b>8.8</b>	<b>6.5</b>	<b>5.8</b>	<b>6.0</b>

# TEA rates in Scotland by migrant status and education level, combined 2002 to 2012 database

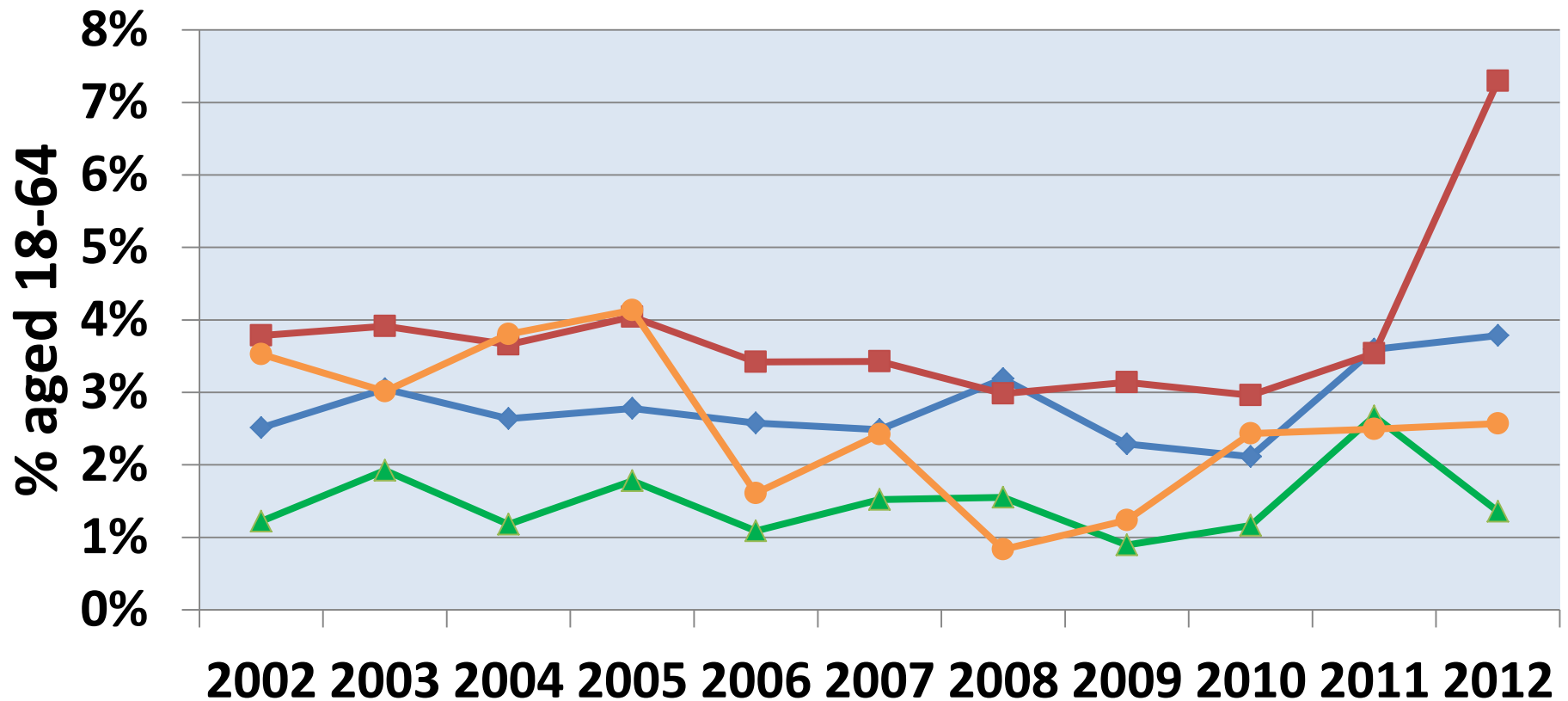


Nation of birth	Scots-born		English-born		Immigrants	
	Non-graduates	Graduates	Non-graduates	Graduates	Non-graduates	Graduates
Resident in Scotland	3.7	5.7	7.4	8.8	11.3	6.4
Resident in England	5.0	8.0	5.0	7.6	6.9	9.2

# Solo/Low versus Medium/High Job Expectation early-stage Entrepreneurial Activity by education level in Scotland



- ◆ SLEA Non-graduate
- SLEA Graduate
- ▲ MHEA Non-graduate
- MHEA Graduate



# GEM Scotland 2012 Summary

- **In three years, Scotland's TEA rate has moved from the fourth quartile to the second quartile of innovation-driven nations**
- **Migration patterns and income distribution differences account for a third of the persistent difference in TEA rates between Scotland and the UK**
- **Most of the recent increase came from graduates starting low aspiration businesses**
- **Issues for Scotland's innovation-based entrepreneurship ecosystem include exits for investors, effective connections, skills for growth, role of universities and role models/positive messages**



University of  
**Strathclyde**  
**Glasgow**