

GLASGOW
& CLYDE

R/APE
CRISIS

THE IMPACT OF SEXUAL VIOLENCE & ABUSE ON THE LIVES OF SURVIVORS

Isabelle Kerr
2018

ESHE

Equally Safe
in Higher Education

GLASGOW
& CLYDE

R/ A P E
CRISIS

Quick Quiz

What do you know?

What don't you know?

ESHE

Equally Safe
in Higher Education



GLASGOW
& CLYDE

RAPE
CRISIS

Legal Definition

Domestic Abuse Currently, there is no crime of 'domestic abuse' in Scotland.

Domestic Abuse (Scotland) Bill is going through the legislative process within the Scottish Parliament at January 2018.

ESHE

Equally Safe
in Higher Education

GLASGOW
& CLYDE

R / A P E
CRISIS

Domestic Abuse (Scotland) Bill

The Bill provides for the statutory offence of domestic abuse against a partner or ex-partner. It sets out 3 conditions ALL of which have to be proven if there is to be a conviction for the offence:

1. The accused engaged in a course of behaviour which was abusive of the accused's partner or ex-partner

GLASGOW
& CLYDE

R / A P E
CRISIS

Domestic Abuse (Scotland) Bill

2. A reasonable person would consider the course of behaviour to be likely to cause the partner or ex-partner to suffer physical or psychological harm.
3. The accused either intended the course of behaviour to cause such harm or was reckless as to whether it would

GLASGOW
& CLYDE

R / A P E
CRISIS

Domestic Abuse (Scotland) Bill

The Bill is intended to cover behaviour that is already criminal as well as abuse that might not be captured by current law.

Existing offences (e.g. assault, attempted murder) can still be used where there is a single incident rather than a course of behaviour being prosecuted.

The Bill is at Stage 3 in the legislative process

GLASGOW
& CLYDE

RAPE
CRISIS

Legal Definition

Rape is when a man uses his penis to penetrate someone's vagina, anus or mouth without their consent (the person did not agree to it). The victim of the offence can be a woman or a man.

Sexual assault by penetration is when the attacker sexually penetrates the vagina or anus of the victim without their consent. The penetration could involve a part of the attacker's body or an object.

ESHE

Equally Safe
in Higher Education

GLASGOW
& CLYDE

RAPE
CRISIS

Legal Definition

Other sexual offences

- Sexual assault
- Sexual Coercion
- Coercing a person into being present during sexual activity
- Coercing a person into looking at a sexual image
- Communicating indecently
- Sexual exposure
- Voyeurism
- Administering a substance for sexual purposes



GLASGOW
& CLYDE

RAPE
CRISIS

Consent

Consent to the sexual activity must be by
“free agreement”

- Alcohol – too drunk to agree
- Drugs – too far under the influence to agree
- Asleep
- ‘Passed out’ for example from alcohol or drugs
- Capacity – for example, learning difficulties or inability to communicate

ESHE

Equally Safe
in Higher Education

GLASGOW
& CLYDE

R/ A P E
CRISIS

Consent

Consent to one act “does not of itself imply consent to any other conduct”.

Consent can be withdrawn at any time during the act.

ESHE

Equally Safe
in Higher Education

GLASGOW
& CLYDE

R/ A P E
CRISIS

Consent

It's really quite simple

<https://www.youtube.com/watch?v=oQbei5JGiT8>

ESHE

Equally Safe
in Higher Education

GLASGOW
& CLYDE

R/ A P E
C R I S I S

Prevalence Scotland Wide

- Scottish Government figures 2016/17
- Reported sexual crimes increased by 5% from 10,273 to 10,822
- Since 2007/08 there has been an increase in recorded sexual crimes of 65% though overall, recorded crime has decreased
- Possible reason for this may be increase in specialist services, trained officers and improved services.

GLASGOW
& CLYDE

R/APE
CRISIS

Statistical breakdown 2016/17

Rape and attempted rape - 1,840 (17%)

Sexual assault - 4,329 (40%)

Crimes associated with
prostitution - 324 (3%)

Other sexual crimes - 4,329 (40%)



GLASGOW
& CLYDE

R/ A P E
CRISIS

Glasgow & Clyde Rape Crisis Statistics 2016/17

Calls, texts, emails - 15,341

Individuals receiving one to
one support services - 1,157

One off contacts - 798

Police/court advocacy services - 270



GLASGOW
& CLYDE

R/ A P E
CRISIS

Abuse On Campus

NUS carried out two major studies:

2010 – “Hidden Marks”

2014 – “That’s What She Said”

ESHE

Equally Safe
in Higher Education



GLASGOW
& CLYDE

R/ A P E
CRISIS

“Hidden Marks” 2010

- 97% of women students felt safe in university buildings in daytime but 33% did not feel safe in the evenings
- 68% had experienced verbal or non verbal abuse such as groping, flashing, unwanted sexual comments
- 16% reported unwanted kissing, molesting, touching, most of which happened in public
- 12% reported being stalked
- 13% had considered giving up their course

GLASGOW
& CLYDE

R/ A P E
CRISIS

“Hidden Marks” 2010

- **40% of the women polled DID NOT DISCLOSE TO ANYONE AT THE TIME OF THE INCIDENT**

The study found that perpetrators were most likely to be students at the same university as the victims.

ESHE

Equally Safe
in Higher Education

GLASGOW
& CLYDE

RAPE
CRISIS

Abuse On Campus

Guardian article on 5th November 2013:

“In clubs there’s a game called ‘underhanding’ where a boy stands behind a girl and tries to put his fingers inside her.”

“Sexual harassment is constant. People would touch my legs, bum, my boobs without my consent, two or three times a week when I was a fresher.”

GLASGOW
& CLYDE

R/ A P E
CRISIS

Long Term Impact?

If a single event and the trauma survivor has adequate support and has had no, or little prior trauma, she may be left shaken but events may feel 'behind' the survivor now.

ESHE

Equally Safe
in Higher Education

GLASGOW
& CLYDE

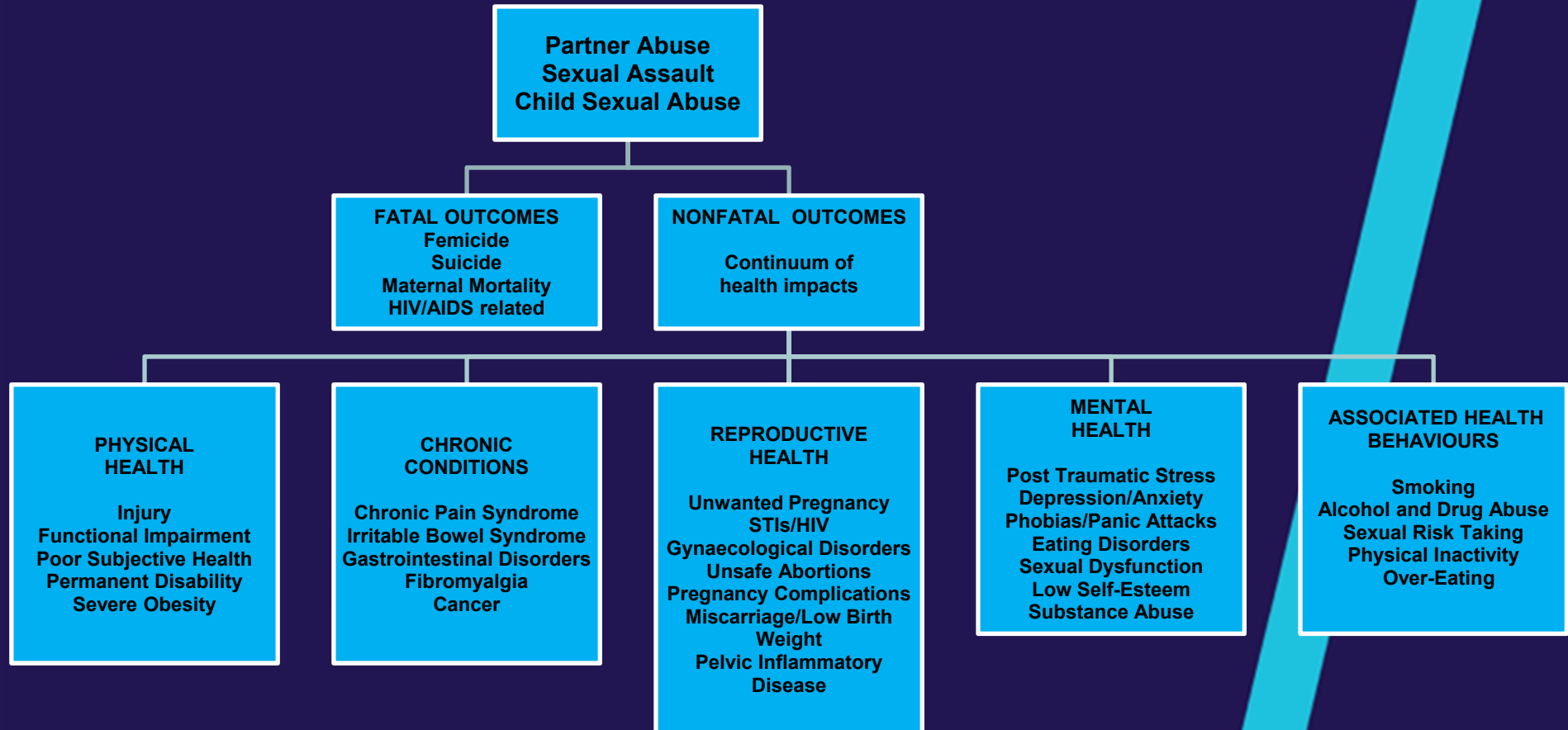
R/ A P E
C R I S I S

Long Term Impact?

If recurrent, or even one-off events and the trauma survivor has little or no support, she can be left with a host of 'implicit' memories, intense responses that tell the story but without words to describe or the knowledge that the survivor is remembering. The survival response can become chronically activated resulting in long term effects on the brain and body.



Health Impacts of GBV (Heise et al)



GLASGOW
& CLYDE

R / **A** **P** **E**
CRISIS

Support in the aftermath of sexual violence

- Support from close family or support network is best if possible
- Specialist support services (Archway or Rape Crisis)
- Support services only work if the survivor is ready for them
- Advocacy services in the immediate aftermath may be the best option



GLASGOW
& CLYDE

R/ A P E
CRISIS

Support in the aftermath of sexual violence



On Campus Support Service

- Wednesdays and Fridays
- Drop-in and appointments
- Full range of back up services at GCRC

ESHE

Equally Safe
in Higher Education

GLASGOW
& CLYDE

RAPE
CRISIS

Resources/Awareness/Education

'I Just Froze' campaign

Fight or Freeze: <https://www.youtube.com/watch?v=O5h-N0N8DaY>

So Many Reasons:

<https://www.youtube.com/watch?v=WcZUWsvNyyU>

Consent – It's as simple as tea

<https://www.youtube.com/watch?v=oQbei5JGiT8>