

Ross Priory Club

University of Strathclyde



Newsletter

ISSUE 11 September 2020

Who to contact:

Membership, Golf Bag Tag
Sally King
rosspriory.club@strath.ac.uk
 tel 0141 548 4441

Conferences & Events
Lesley Brownlee
lesley.brownlee@strath.ac.uk
 tel 0141 548 3565

**B&B, Catering Reservations,
 General Enquiries**
ross.priory@strath.ac.uk
 tel 01389 830 398

Boating/Angling Section
Alastair Wilson
al.wilson@strath.ac.uk

Golf Section
David Currie
rpgcsecretary@gmail.com

In this issue:

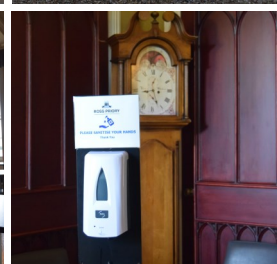
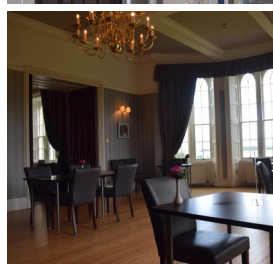
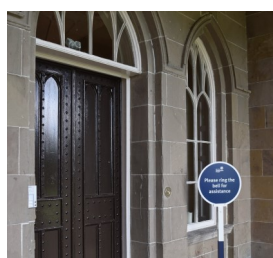
WHO TO CONTACT	1
WE'RE BACK. WE'RE SAFE. WELCOME!	1
MEMBERSHIP RENEWALS	1
COFFEE MACHINE	1
REFURBISHMENT	2
OSPREY NEST	2
SUSTAINABLE STRATHCLYDE	2

WE'RE BACK. WE'RE SAFE. WELCOME!

In March 2020, we sadly had to close our doors and gates of the Ross Priory estate in response to the COVID-19 restrictions.

As restrictions lifted we opened up golf and boating quite early on. Now, after 5 long months, we were delighted to re-open the house doors last week to all our returning members and guests. All that's changed are the safety measures in place, the warm welcome is still the same!

We thank you all for your understanding throughout this time. We will rely on your continued support as we slowly get accustomed to the 'new normal' and ask all those who visit to familiarise themselves with the guidelines for pre-booking prior to arrival and adhere to the safety measures outlined within our Ross Priory—Welcome Back document, available on our [members' web page](#).



MEMBERSHIP RENEWALS

Now that all areas of Ross Priory have re-opened for members, following the lockdown, we have invited all outstanding subscriptions to be renewed for the remainder of our 2020/21 club year.

Any queries regarding membership, please contact Sally King via email on rosspriory.club@strath.ac.uk

COFFEE MACHINE

After much investigation and in response to popular demand, we are pleased to advise that Ross Priory now has a fabulous new bean to cup coffee machine, which offers a range of new options including Cappuccino, Espresso, Latte, Americano and Hot Chocolate in 12oz mugs and 6oz cups. Decaffeinated also available.

Already it is proving to be a very popular new addition.



OUR WEB PAGE

www.strath.ac.uk/rosspriory

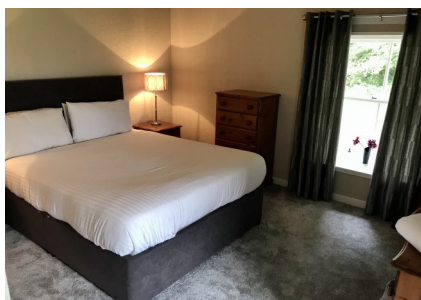
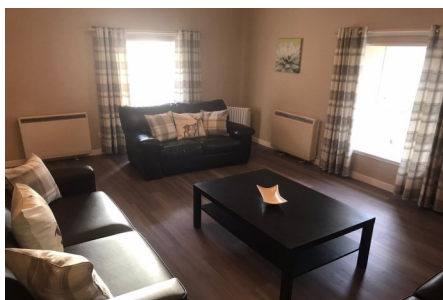
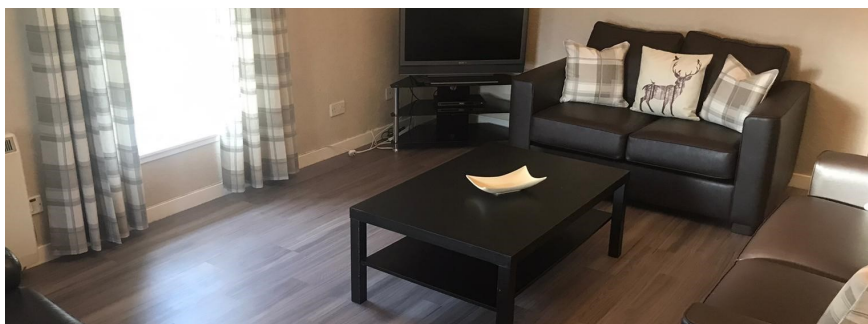
We're on Facebook



www.Facebook.com/RossPriory

REFURBISHMENT

Lochside Cottage

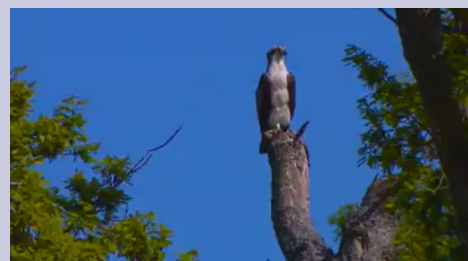


During our period of closure, we were able to make some very positive improvements to the Lochside Cottage in terms of flooring, with new Karndean floors in the lounge and entrance hallway and new carpeting in the bedrooms. This has been complemented by new soft furnishings with a few new key furniture items on their way too.

OSPREY NEST

Following our communications over the summer, many of you will be aware of the young osprey couple who travelled from South African and chose to nest at Ross Priory this year, taking advantage of the peace and quiet on the golf course which came with the lockdown restrictions.

Affectionately named by our team as Hector & Jean, the pair were first spotted in April and seemed to settle in very nicely. Sadly in June, the pair abandoned the nest, as it seemed a predator had gained access to the nest and stole the chicks in the night.



SUSTAINABLE STRATHCLYDE

After a number of years in planning, we are delighted that Ross Priory now has 2 new electric vehicles: an electric 7 seater vehicle for staff transport, member train station collections and travelling to and from the University main campus as well as another vehicle for use by the gardening team.

In addition we have 2 charging stations, one for use of the staff vehicles and the other situated in the car park for use by the public. We hope this will be very well received by our members with electric and hybrid transport.

Not only does this benefit the environment, but it will also benefit Ross Priory's accounts. Win, win!

