



University of
Strathclyde
Glasgow

Incoming Exchange Factsheet 2025/26

<http://www.strath.ac.uk/rio/exchangestudyabroad/incoming/>

**THE QUEEN'S ANNIVERSARY PRIZES
2019 & 2021**

For Higher and Further Education

UNIVERSITY OF THE YEAR

2012 & 2019

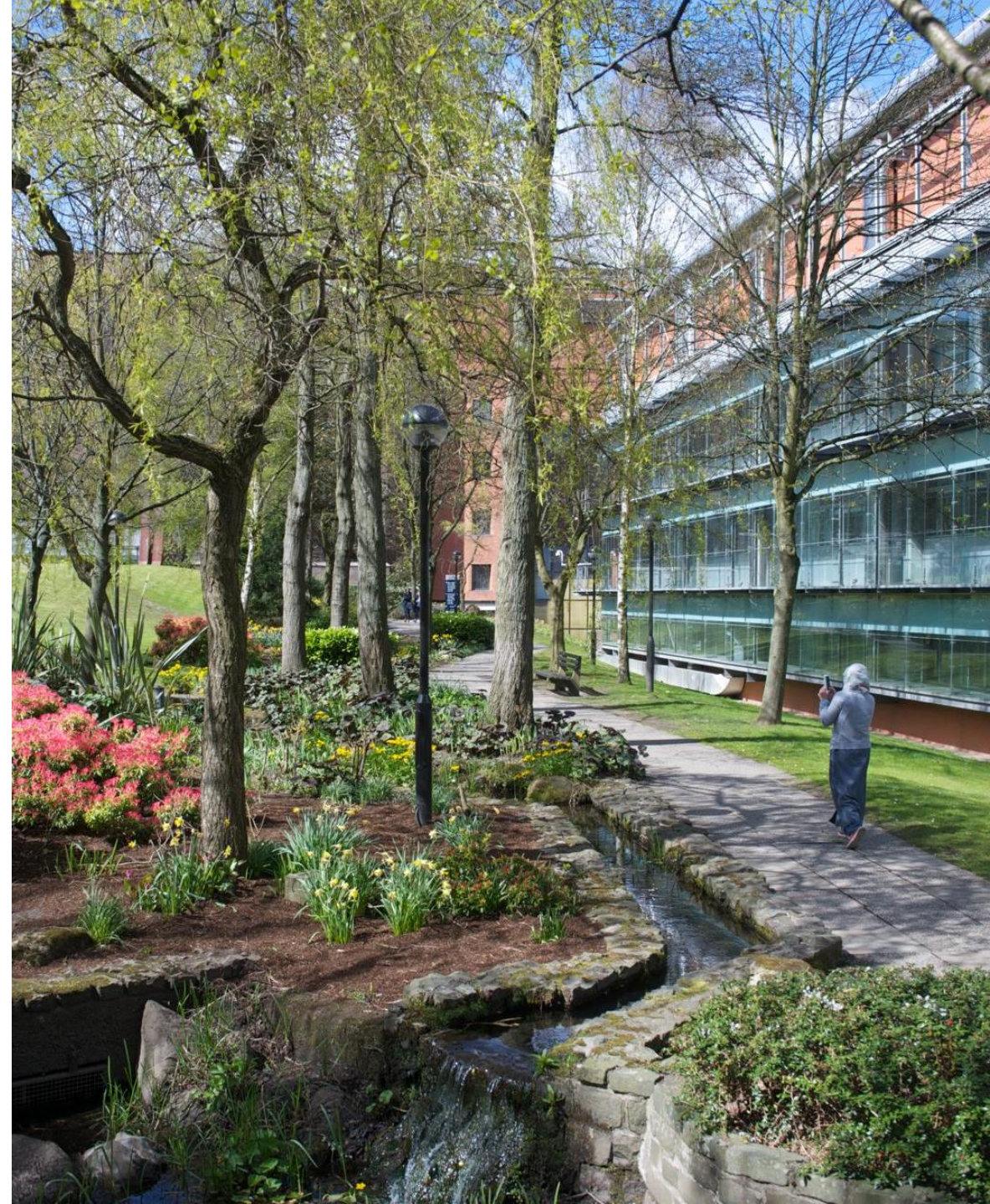
Times Higher Education

**SCOTTISH UNIVERSITY OF THE YEAR
2020**

The Times & The Sunday Times

Contents

- ❖ *About us*
- ❖ *The Exchange Team*
- ❖ *Find us on the Map!*
- ❖ *Nomination/ Application deadlines*
- ❖ *Provisional Key Dates for Session 2025/26*
- ❖ *Strathclyde Exchange Journey*
- ❖ *Classes at Strathclyde*
- ❖ *How to select your classes*
- ❖ *Acceptance documents*
- ❖ *Visa Information*
- ❖ *English Language Requirements*
- ❖ *ETA requirement*
- ❖ *Academic Transcript*
- ❖ *Information and Advice*



About us

The University of Strathclyde is a leading international technological university based in the centre of Glasgow. Inspired by our founding principle as ‘a place of useful learning’, our mission is to make a positive difference to the lives of our students, to society and to the world.

Strathclyde students benefit from an innovative and practical educational experience enhanced by its integration with our research capabilities, high-quality academic resources and an unparalleled industry engagement programme. The excellence of our research is evidenced by the growth in range and scale of our research collaborations and by our performance in the Research Excellence Framework 2021 where almost 90% was rated ‘world-leading’ or ‘internationally-excellent’.

We have redefined how we collaborate and work with industry, government and the third sector to ensure innovation and knowledge exchange are fundamental activities that deliver tangible impact.

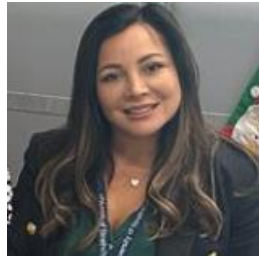


The Exchange Team



Kate Kenyon

Student Exchange Officer



Alejandra Moir

Incoming Exchange Coordinator



Victoria McMillan

Incoming Exchange Coordinator

Please direct all enquiries to the following mailbox
incoming.exchanges@strath.ac.uk

FIND US HERE!

In the heart of the city, our campus is a short walk from two mainline railway stations, bus station and the subway to help you get around the city and to visit the rest of the UK.

You can find **The Exchange Team** at the following address:

★ **Recruitment & International Office**
Level 7, Room 701
Learning and Teaching Building
48 North Portland Street
Glasgow
G1 1XN



Nomination/ Application Deadlines

For students applying to commence their study in September, nominations open on the 1st of March, the nomination deadline is 1 May.

For students applying to commence their study in January, nominations open on the 1st of September, the nomination deadline is 1 October

Once a student's nomination has been approved by the appropriate department, the applicant will receive an automatic email directing them to the application process.

Applicants will have two weeks to complete their Exchange Application from the date their nomination is approved.



Provisional Key Dates for Session 25/26

Semester 1

- Campus housing opens: 15 September 2025
- **Exchange Team Welcome meeting: Tuesday 16 September 2025**
- Welcome Week: 15 – 21 September 2025
- Classes: 22 September – 7 December 2025 (11 week teaching period)
- Exam Period : 8 – 19 December 2025 (2 weeks)
- 19 December – Final day of term.
- Vacation : 22 December – 09 January 2026

Semester 2

- Campus housing opens: 12 January 2026
- **Exchange Team Welcome meeting: Tuesday 13 January 2026**
- Welcome Week: 12 – 18 January 2026
- Classes : 19 January – 05 April 2026 (11 week teaching period)
- Spring Break Vacation : 7 – 17 April 2026 (inclusive)
- Exams Period : 20 April – 22 May 2026 (5 weeks)
- 22 May – Final day of term.

Check link for changes.

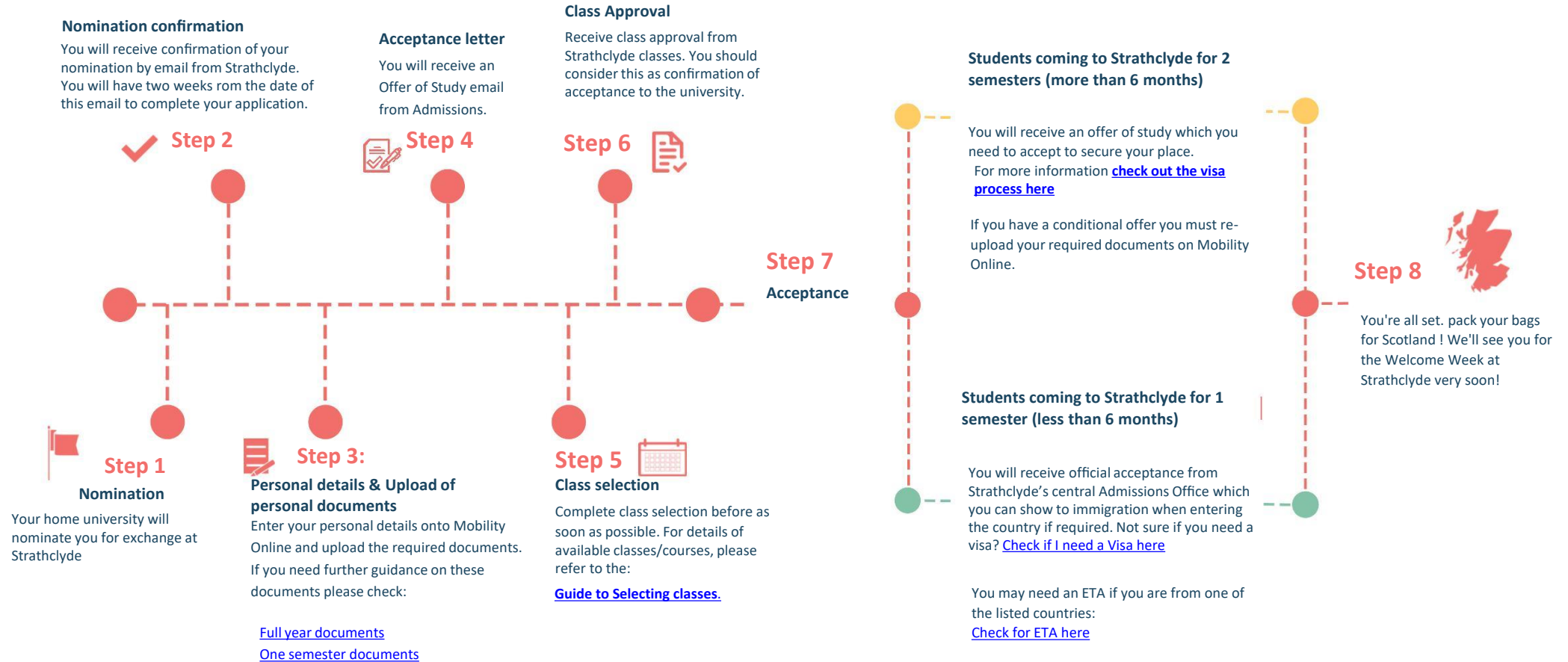
<https://www.strath.ac.uk/keydates/2025-26/>

STRATHCLYDE EXCHANGE JOURNEY



University of
Strathclyde
Glasgow

A guide through the exchange process at the University of Strathclyde



Please pay attention to any links which appear, and always check your junk/spam folder for our emails!

Classes at Strathclyde

Guide to Class Levels

Level 1 - introductory level and limited previous knowledge or study in the subject required.

Level 2 & 3 – requires some previous study in the subject.

Level 4 - Not usually available to exchange students unless they have significant background in the subject and meet all the relevant prerequisites for the class.

Please refer to the "Classes available to Exchange students" section of the [Guide to choosing classes](#) for further details of details of the classes available in each department/school (you can only choose from classes listed on that guide).

Applicants should list their classes in order of preference and include additional classes in case one or more core classes are rejected.

Applicants may choose classes from a maximum of two departments: one primary department and one secondary department.



How to select your classes

Credits

60 Strathclyde Credits (30 ECTS) is a regular full-time load per semester.
(something about min/max number of credits)

This could be between 3 – 6 classes depending on the host department.

Minimum of 60% of classes in **Primary Department**. (40 Strathclyde credits)

One or two classes can be selected from a **Secondary department** (20 Strathclyde credits -applicant must meet the prerequisites and have approval from the secondary department)

If you are considering **modifying the number of academic credits** associated with your studies, it is important to take the following steps:

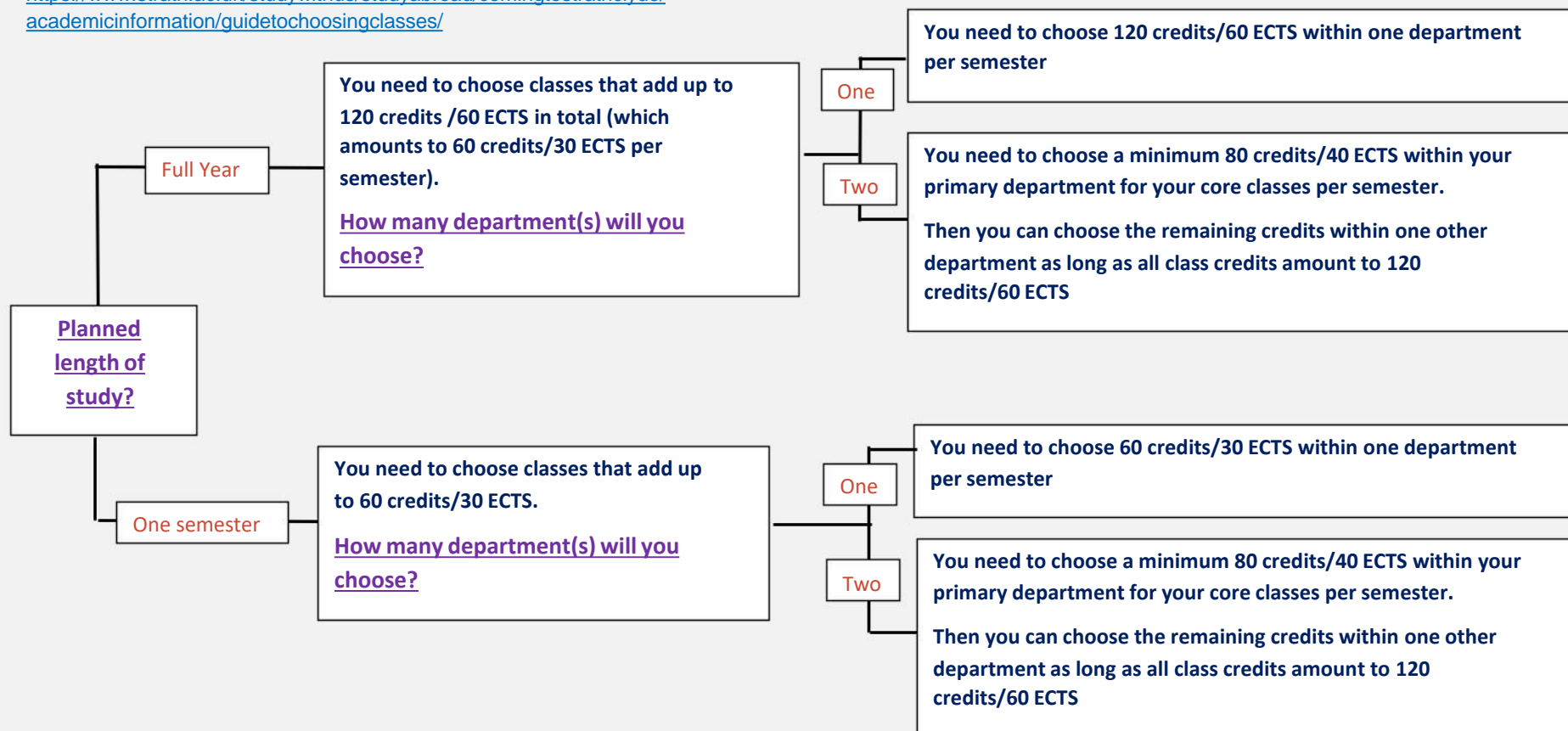
- Contact the administrative office of your home university to discuss your intentions
- Once you have their support, kindly request that they send us an official email confirming their agreement with your decision
- We will also agree this with the department here at Strathclyde.



University of Strathclyde - Class Selection Process



<https://www.strath.ac.uk/studywithus/studyabroad/comingtostrathclyde/academicinformation/guidetochoosingclasses/>



Alternative classes: You will be asked to give some extra choices for classes that you may wish to take. Some classes may have timetabling issues or they may not run the semester you are here with us which means that having some options before you get here is a good idea.

Academic Accommodation requirements: Please email us at incoming.exchanges@strath.ac.uk to discuss this before your arrival at Strathclyde



Acceptance Documents

Applicants will receive an email from the system once their classes have been approved. This is confirmation of their exchange place.

Students planning to attend Strathclyde for **one semester** will subsequently receive an official acceptance from Strathclyde's central Admissions Office which they can show to immigration when entering the country if required.

Students planning to attend Strathclyde for **two semesters** will receive an offer of study which they will need to accept to secure their place. The offer will list any outstanding documents which may still be required to receive a CAS to apply for a visa.

Please ensure the email address provided in your online application has sufficient capacity to receive large files.



Visa Information

Student visa

This is applicable to all students planning to attend Strathclyde for **more than 6 months**, including those from the EU, Switzerland, Norway, Iceland and Liechtenstein. [Click here](#) for more information.

In order to apply for a **Student visa**, applicants will require to obtain a **CAS** from Strathclyde. To obtain a CAS applicants will require to submit the following supporting documents to Strathclyde:-

- I. Evidence of acceptable English Language Proficiency (refer to section below on English language requirements.)
- II. Official transcript (original and 2nd version translated into English. See note on the following slide.)
- III. Confirmation of no previous UK study on a Student visa. - Valid passport

Students planning to attend Strathclyde for **less than 6 months** may not require a visa (if you are a non visa national), however we would recommend that all applicants check using the

'Check if I need a visa' tool at the link below. <https://www.gov.uk/check-uk-visa>

Visa Information (2)

Note regarding transcript :

This must be a fully certified translation from a professional translator or translation company that can be independently verified by the Home Office. The translation must include all of the following information:

- confirmation that it is an accurate translation of the document
- the date of translation
- the full name and signature of the translator or an official from the translation company
- the translator or translation company's contact details

If you are EU/EEA/Swiss student and have pre-settled or settled status you may not require a student visa, the university will still require evidence of this as part of the application to ensure you are given the correct offer conditions. Please upload a screenshot of your Share Code to your application so that the university can verify your status here.

For further information please see <https://www.gov.uk/view-prove-immigration-status>



ETA Requirement

Depending on your nationality, you might be required to apply for before you travel to study here.

What is an ETA?

An Electronic Travel Authorisation (ETA) is advanced permission to travel to the UK. This can be applied for by nationals of certain countries and comes into force for anyone travelling to the UK on or after 8th January 2025

The ETA must be for before you travel to the UK. The ETA allows you to request permission to enter the UK as a Standard Visitor for up to 6 months for tourism or short-term study.

Whether you need to apply for an ETA will depend on your nationality. Please check if it applies to you on this website: <https://www.strath.ac.uk/studywithus/internationalstudents/visasandimmigration/eta/>

Cost

The fee for an ETA application is £10. You cannot get a refund after you apply.

How to apply?

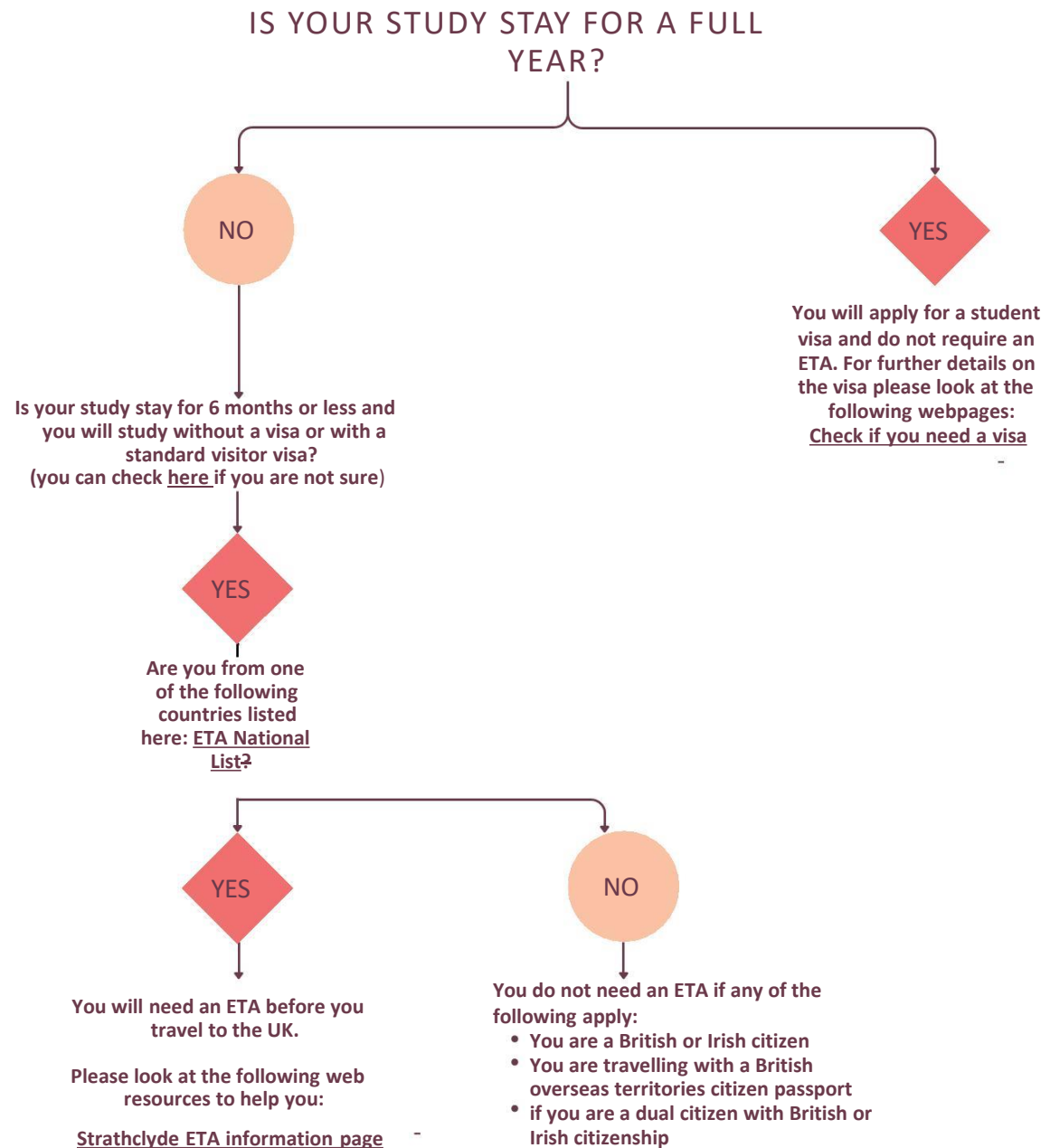
There are two ways to apply. You can apply for an ETA using the UK ETA app on a mobile phone or online.

Useful links: [UK government ETA webpage](#) - [Strathclyde ETA webpage](#)



DO I NEED AN ETA?

In 2024, the UK introduced the ETA (electronic travel authorisation). It is advanced permission to travel to the UK for by nationals of selected countries. It costs £10 and is applied for via the app or online. A decision is normally made within 10 minutes. Use this flowchart to work out if this applies to you.



English Language Requirements

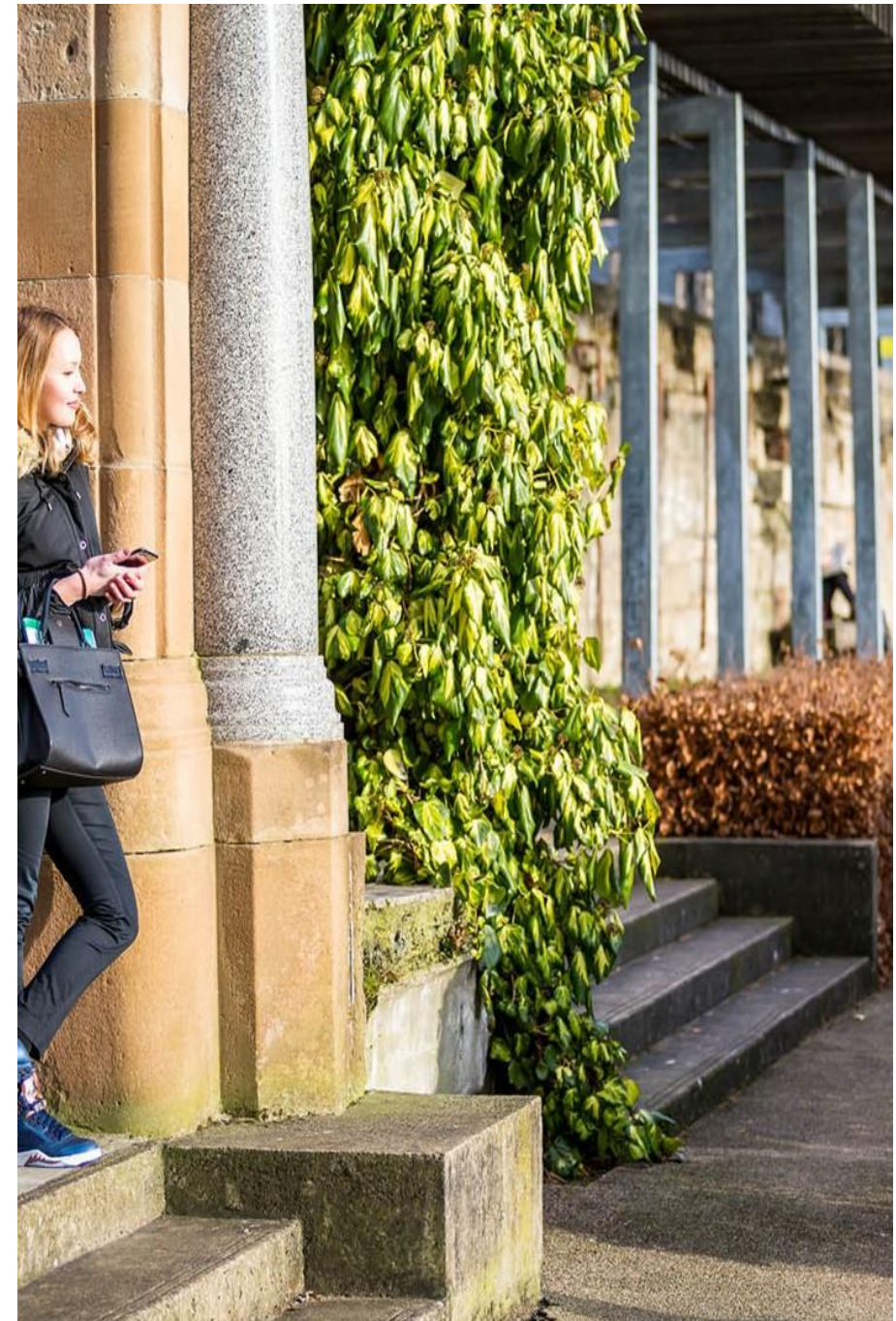
Applicants applying for a student visa

Applicants applying for a **Student visa** to come to the UK must provide evidence of their English language proficiency that meets the requirements of the course. This is a UKVI requirement as part of the visa application process. Normally IELTS 6.0 or 6.5 overall with nothing less than 5.5 in each component or equivalent test depending on the course. IELTS expires two years after the date on the certificate and still needs to be valid at the time of the visa application.

You can find more information about the accepted tests at the links below. Refer to section entitled 'For entry on to main degree'.

<https://www.strath.ac.uk/studywithus/englishlanguagerequirements/>

<https://www.strath.ac.uk/studywithus/englishlanguagerequirements/recognisedenglishlanguagequalifications/>



English Language Requirements

Applicants applying for one semester (less than 6 months without a visa)

If you are coming to the UK for one semester (**less than 6 months without a visa**), the declaration from your home institution which confirms you have a good level of English (equivalent to B2 or above) in the Common European Framework of Reference for language (CEFR) is sufficient.

Partners are asked to confirm this on behalf of each applicant when they are nominating them.



Academic Transcript

Transcripts can be downloaded directly from Mobility Online.




Student guidance:

- Semester 1 students – transcripts will normally be available to download by the **end of February**.
- Semester 2/Full year students – transcripts will normally be available to download by the **end of July**.

(**Interim** transcripts will **not** usually be provided at the end of semester 1 for full year exchange students).

Partner guidance:

Log in to Mobility Online

1. Click on 'My Mobility Online' and then 'my applications' and a list of your students will appear.
2. Click on the student's name and you will be taken to their individual record.
3. Scroll down to the bottom and you will see this icon.  Click on it.
4. A new screen will appear, and you will see the uploaded transcript. Tick the box, and click on either of these icons   to download your student's transcript.



Information and Advice

For more information, including details of Strathclyde's orientation and welcome activities, living costs, health matters, the city of Glasgow and much more, please go to

This information will continue to be updated on an ongoing basis.

<https://www.strath.ac.uk/studywithus/internationalstudents/beforeyouarrive/internationalarrivalsupport/prearrivalguide/>.



Disability and Wellbeing

If you have a disability or require any adjustments or support during your studies, our disability and wellbeing team encourage you to let us know as soon as possible so these can be put in place to support you during your studies.

<https://www.strath.ac.uk/professionalservices/disabilityandwellbeing/>





Accommodation in Glasgow

Being in the heart of the city then we are surround by lots of different accommodation options:

- On campus accommodation: [Accommodation | University of Strathclyde](#)
- Private accommodation: [Private rented accommodation | University of Strathclyde](#)
- Our Students Union has created the helpful [House hunting starter guide](#)



University of **Strathclyde** Glasgow