



Size Matters

CPD

**Continuing Professional
Development Course**

SIZE MATTERS
MAY - JULY, 2012
JULY - AUGUST, 2012



SIZE MATTERS

An innovative and provocative tailor-made CPD course for large architectural practices, designed and delivered by the Department of Architecture, University of Strathclyde, at a location to suit the practice.



BACKGROUND

Every size of practice faces a wealth of on-going challenges within the contemporary professional landscape. It may be how to enhance innovation, pursue opportunities abroad, increase environmental credentials or develop new expertises. Our CPD course is designed to reconnect and enthuse staff within large practices with initiatives, movements and discussions that are happening on important issues and place their wider concerns within a broader cultural and political context.

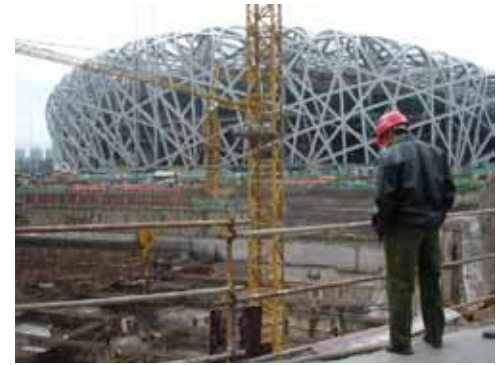


KEY CONTENT

- Architectural design and culture.
- Innovation and quality.
- Longevity and health in the built environment.
- Project management and delivery.
- Internationalism.
- Urban Design and the public realm.
- Roles and responsibilities.

THE COURSE'S AIMS

- To refresh the architectural ethos of large practices.
- To introduce some key contemporary issues affecting the profession and building industry.
- To invite debate on the changing role of the profession and its means of representation and delivery.
- To explore the meaning of quality both in architectural service and architectural product.
- To explore lessons from abroad.
- Building capabilities to support sustainable growth.



WHY STRATHCLYDE UNIVERSITY'S DEPARTMENT OF ARCHITECTURE?

The Department of Architecture is unique within UK schools of architecture:

- Senior staff have unparalleled national and international practice experience and award-winning buildings.
- Leading academics in urban design, cultural studies, history and sustainability.
- Existing close links to cultural and City institutions, local communities and wider international contacts.
- The new Centre for 21st Century Practice led by Professor Gordon Murray, Professor Alan Pert and Christopher Platt.

This series is offered in collaboration with the Strathclyde Institute for Operations Management.



THEMES

Detailed themes and timetables are fine-tuned to individual practices' requirements and suggestions. These could range from a series of lunchtime sessions to a series of seven half-day seminars spread over a 6 month period and look something like the following -

DAY 1- THE SPECIAL CASE FOR ARCHITECTURE

- Contemporary architectural issues.
- An introduction to urban design.
- Three approaches to architecture.

DAY 2- THE CLIMATE FOR ARCHITECTURE

- Design Reviews in practice.
- Health & longevity in the built environment.
- 21st Century craft in the building industry.

DAY 3- SUSTAINABILITY

- How future cities look. Part 1.
- How future cities look. Part 2.
- How future cities look. Part 3.

DAY 4- MATERIALS, ENVIRONMENT & QUALITY

- BREEAM.
- Smart materials.
- Distance and Proximity: Building abroad.

DAY 5- MEANS OF REPRESENTATION & DELIVERY

- BIM
- Contracts and Liabilities.
- Project management.

DAY 6- THE CHANGING ROLE OF THE ARCHITECT

- Pedagogy in the profession.
- Developing innovation.
- Place, space and the public realm.

DAY 7- THE CHANGING ROLE OF THE CLIENT

- Matching expectation and ambition.
- The Briefing Process.

DAY 8- BUILDING CAPABILITIES TOWARDS SUSTAINABLE GROWTH

- Enabling innovation and creativity.
- Developing leadership & strategies.
- Creating a strong workplace.

INDICATIVE COST

£75/half day per delegate.

£700/ half day for 10 delegates.

Full series £4,500 for 10 delegates, if booked 28 days in advance.

LOCATION

Practice location, or
Department of Architecture,
University of Strathclyde,
131 Rottenrow,
Glasgow,
G4 ONG

CONTACT

Professor Gordon Murray
g.murray@strath.ac.uk or gmurray@gmaryder.com
0141 548 3171 or 0141 285 0230

