

Issue

September-November

30

2018

# Newsletter



**eSMART: Randomised controlled trial to evaluate electronic Symptom Management using the Advanced Symptom Management System (ASyMS) Remote Technology for patients with cancer**

The Autumn 2018 eSMART Newsletter Issue is here to keep you updated about the project's news and recent recruitment achievements! This edition has been prepared by the eSMART team at the University of Strathclyde, in which it will have a special feature on the recent eSMART events, a warm welcome to new members of the Glasgow team and an update on the study's recruitment.

## eSMART past events



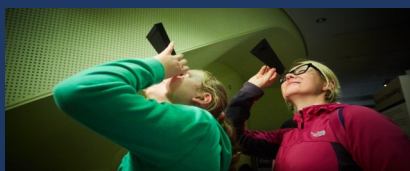
**EONS11 at ESMO 2018 – Excellence in cancer nursing through symptom management, patient safety and leadership**  
October 20-22, Munich, Germany

### EONS 11 at ESMO 2018

20-22 October 2018, Munich, Germany

Dr Lisa MaCann presented "Linking patient-reported outcomes and symptom management, The eSMART study", during the Session: New cancer nursing roles, innovation in action, on Monday 22<sup>nd</sup> October 2018.

Find out more on p.4

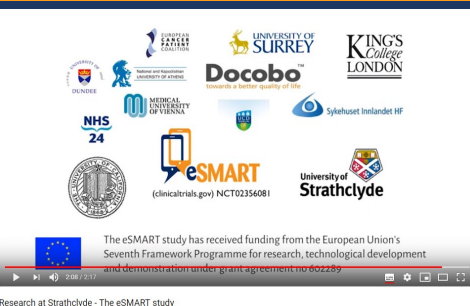


### Explorathon Extravaganza 2018

Friday 28<sup>th</sup> 2018, Glasgow, UK

Dr Lisa MaCann and Liane Lewis represented the eSMART research team at the Explorathon Extravaganza event at the Riverside Museum in Glasgow.

Find out more on p.4



The eSMART study has received funding from the European Union's Seventh Framework Programme for research, technological development and demonstration under grant agreement number 602289

Research at Strathclyde - The eSMART study



We would like to welcome all of you back after the summer break. Since the last issue of our newsletter, a lot has happened.

We are very pleased to announce that most of our clinical sites are now close to their recruitment targets. We anticipate

that up to December 2018, we could reach our target to patients number, thanks to all of our researchers and clinical colleagues hard work!

The current issue of the newsletter covers the latest news of our project like the patient recruitment update, recently events that eSMART was presented and interviews with new members of staff which are involved in the eSMART study.

Thank you for your continued support and all the best with patient recruitment!

## The eSMART Study Film

Keen to learn more about the eSMART study? A short eSMART clip is now available and has been uploaded to the University of Strathclyde YouTube Channel.

Watch [here](#) our study's video and hear directly from some patients, professionals and researchers, including the project's Chief Investigator Prof Roma Maguire and Dr Lisa McCann.

The video is available with subtitles in four languages (English, Greek, German, and Norwegian).

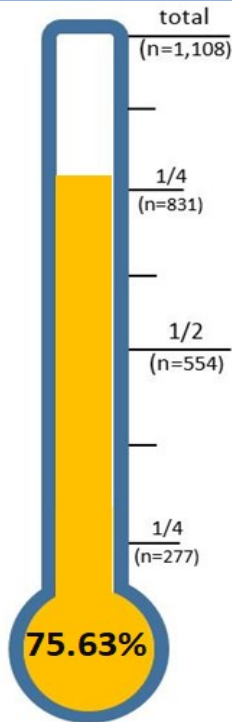
Are you finding it interesting? Why don't you 'like' the clip on YouTube and share it widely on social media? Please also feel free to disseminate it at any events you are attending, to your colleagues and to the clinical teams so they can hear first-hand what patients and professionals think of the system and the eSMART study.

We would like to thank the patients and staff at Guy's and St Thomas' Hospital, and the eSMART research team for facilitating this for us.



This project has received funding from the European Union's Seventh Framework Programme for research, technological development and demonstration under grant agreement number 602289

## Recruitment Update



There are now 838 participants on the study, since recruitment began in May 2016. We would like to say thank you to all our researchers and clinical colleagues for all their work over the past two years for identifying and recruiting eligible participants. This current total is a great achievement for the study. The average number of recruited patients per month is 28. With only one month to go, we are confident that we can reach over our target. Across our five countries (Ireland, Greece, Austria, Norway and the United Kingdom), our participants include:

- 598 with breast cancer,
- 152 with colorectal cancer and,
- 88 with haematological malignancies

Additionally, more than 600 patients have entered the follow up phase of the trial, which focuses on survivorship quality of life. Table 1 shows that overall response rate remains excellent. (Note: Data provisional extracted 29/10/2018)

	3 months	6 months	9 months	12 months
Patients number	607	521	459	392
Completed PROMS	443	360	330	273
Response rate	72%	69%	72%	70%

Although, there are several challenges to conducting an international nursing study of this kind, overall patient participation has been healthy and attrition rates remain low. The recruitment is ongoing and data collection is expected to be completed in December 2018.

Further information on recruitment rates from all clinical sites are illustrated in the graphic below (Figure 1).

### Recruitment thermometer

## eSMART Recruited Figure

### Over-time recruitment performance: Overall

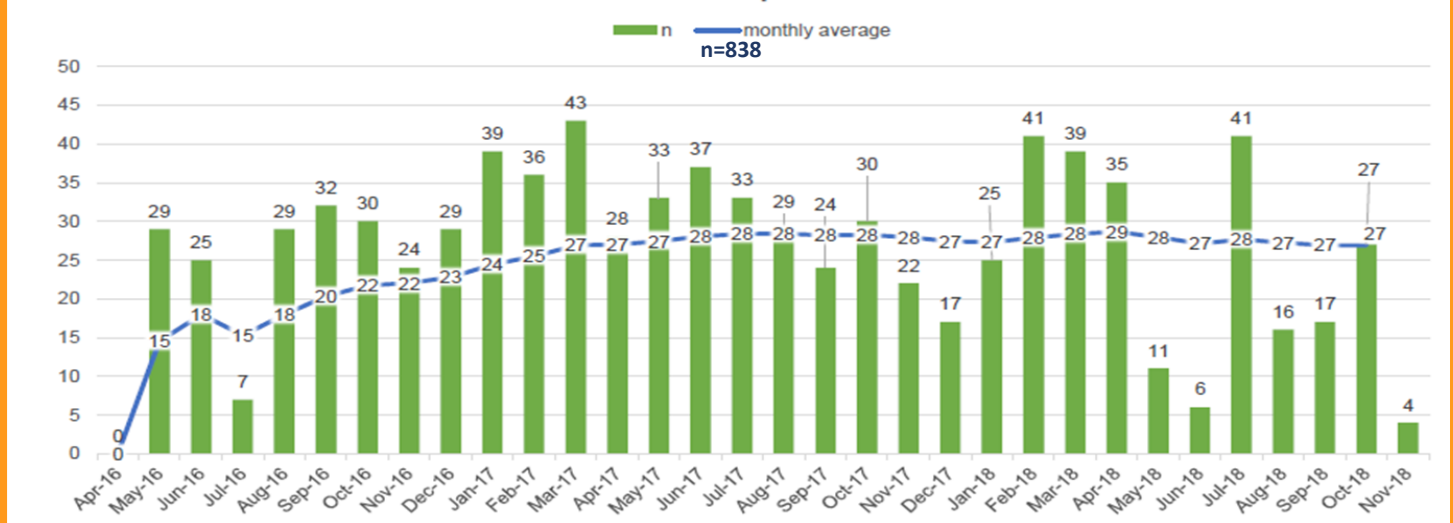


Figure 1. Total recruitment performance over time. Up to 15/11/2018, we have 838 patients recruited in total to the study.



This project has received funding from the European Union's Seventh Framework Programme for research, technological development and demonstration under grant agreement number 602289

## Profile of New Members of Staff



Kehinde Adefila

Data Analyst  
Glasgow Team

“I joined the eSMART project as a Data Analyst in April 2018. Previously, I’ve mostly worked on engineering projects that involved measurements, sensor and flowmeter calibration, data acquisition & processing and developing mathematical computer models.

My primary tasks on the eSMART project include developing and optimising algorithms for processing eSMART multi-dimensional data sets, and the design and implementation of machine learning predictive risk models based on various parameters within the eSMART data sets.

It’s a fantastic opportunity getting to work on such a huge EU funded research project like eSMART which involves many different collaborators across the UK, Europe and the United States. It has also been a prolific experience thus far working with talented people of various disciplinary backgrounds. Coming on to the project from an Electronic Engineering background, this has greatly enhanced my knowledge and awareness of the healthcare environment. Despite the large size of the project with many staff members and groups at different sites in different countries, communication has been effective enough to ensure my assigned tasks are adequately delivered and well in line with the overarching objectives of the project. I look forward to continue working with the team in completing the project, and as well as carrying out further research related advancements, particularly in the area of Artificial Intelligence for clinical healthcare applications.”



Tiyi Morris

Research Assistant  
King’s Health Economics (KHE), Kings College London

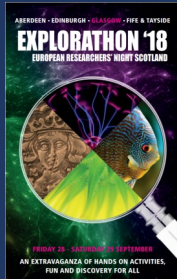
“My name is Tiyi Morris and I am a Research Assistant at King’s Health Economics (KHE) at King’s College London. I am working as a health economist on the eSMART study, collecting unit costs for health-related services in each country, and preparing the economic analysis of the data. This will help us to gain an understanding of the cost-effectiveness of the intervention.

I graduated in Philosophy, Politics and Economics from the University of Warwick, and have gained experience in public sector audit and university administration. I completed the MSc Public Policy and Management at King’s College London in 2016. My dissertation topic was a subgroup analysis of costs and quality of life in patients in the Improving Access to Psychological Therapies - Serious Mental Illness (IAPT-SMI) programme at South London and the Maudsley. Following the MSc, I worked as an intern and analyst on teams consulting pharmaceutical companies on drug price strategies at Evidera.

During my time at KHE I have completed work on projects on interventions for service users with serious mental illness (COFI and STEPWISE). Alongside the eSMART project, I am currently working on the BOUND and OuTSMART projects which consider kidney donation. I am also working on the economic evaluation of the ECLIPSE project which looks at cognitive rehabilitation therapy in early intervention in psychosis.”



## Explorathon Extravaganza 2018



On Friday 28<sup>th</sup> September, Drs Lisa McCann and Liane Lewis represented the eSMART study at the Explorathon Extravaganza event at the Riverside Museum in Glasgow. The Explorathon, the European Researchers' Night, is a night of research that takes place annually in September across 30 countries and over 300 cities in Europe. The event showcases the work of researchers to demonstrate what researchers really do for society and to promote research careers among young people. Researchers participating in the event present their work in a creative and interactive way making it a fun evening for the whole family.

Over the course of the evening, over 100 people visited the stall where eSMART and two other projects from the Computer and Information Science Department, University of Strathclyde were showcased. Visitors of all ages could engage with the eSMART technology, including the patient handsets with the daily symptom questionnaire, and a video about the study. People said that the care that eSMART is providing is fascinating and they recognised the value that it has for patients' care at home. Some hoped that eSMART was already available within the healthcare system in the UK. A lot of people asked really relevant questions, such as how eSMART could be implemented into the healthcare system in the UK and whether we are measuring if it is cheaper than the current care patients receive. They were able to say, that some of these aspects are already being investigated as part of the study. It was impressive how some of the younger audiences already knew a few things about cancer treatment, and some even expressed interest in becoming a researcher of their own in the future. For the very young audiences, the colourful highlighter markers with eSMART logos printed on them, were cause for more excitement than the eSMART technology, but that was okay. In all, this was a great event and a great opportunity to tell the public about eSMART.



Transport Museum - Venue of Explorathon Extravaganza 2018

## eSMART at EONS11/ESMO 2018



Dr Lisa McCann, Deputy Director of the eSMART Study attended the recent ESMO Congress in Munich 19<sup>th</sup> – 23<sup>rd</sup> October 2018. Lisa was an invited speaker within the EONS track at the conference and delivered a presentation within the 'New cancer nursing roles: Innovation in action session' on the Monday afternoon. The session was chaired by Dr Eileen Furlong from UCD and Lisa's talk, 'Linking patient-reported outcomes and symptom management: The e-SMART study', discussed the digital health landscape in the context of cancer nursing and highlighted the successes of the eSMART study to date. Lisa's presentation illustrated the achievements of the eSMART Consortium as a whole, particularly the scale of successful recruitment and digital intervention deployment within multiple sites across Europe. eSMART was one of the largest nurse-led studies presented across the 3 days of the EONS track. The eSMART Consortium look forward to presenting the much anticipated findings of the eSMART study at conference events like these in 2019 and beyond.



This project has received funding from the European Union's Seventh Framework Programme for research, technological development and demonstration under grant agreement number 602289

Issue

September-November

30

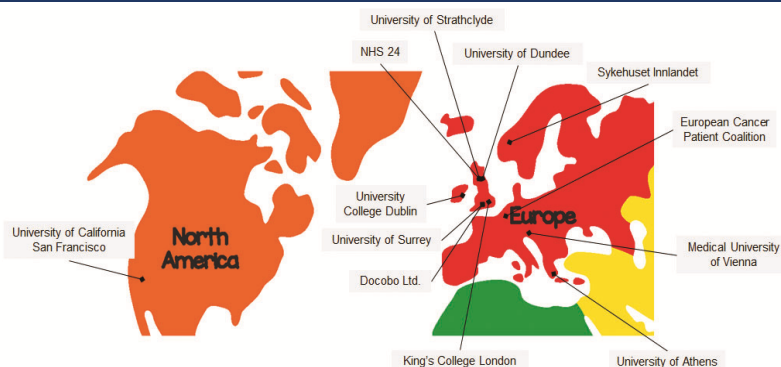
2018

# Newsletter

## eSMART PARTNERS



## Location of eSMART Partners map



Partner	Clinical Site
MUV	Medical University Vienna
UCD	St James's Hospital
	St Vincent's University Hospital
	St Vincent's Private Hospital
UoA	Agioi Anargiri Cancer Hospital
	Metropolitan Private Hospital
	Air Force General Hospital

Partner	Clinical Site
UoStrath	University College Hospital London
Sykehuset Innlandet	Innlandet Hospital Trust
	Hammar Innlandet
UoSurrey	Mount Vernon Cancer Centre
	Guy's and St Thomas'
	St George's London

## Location of eSMART Clinical Sites



## YOUR FEEDBACK

We value your opinion and invite you to share your thoughts about the eSMART newsletter with us: [glasgow-esmart@strath.ac.uk](mailto:glasgow-esmart@strath.ac.uk)

## PREVIOUS ISSUES

If you wish to receive the eSMART Newsletter automatically, please provide us your email address. You can also find previous issues of eSMART Newsletter [here](#).

## The Newsletter Team



Prof Elisabeth Patiraki  
National and Kapodistrian  
University of Athens  
Editor



Prof Christine Miasowski  
University of California,  
San Francisco



Dr Stylianos Katsaragakis  
University of Peloponnese



Liane Lewis  
University of Strathclyde



Isabelle Manneh-Vangramberen  
European Cancer Patient Coalition



This project has received funding from the European Union's Seventh Framework Programme for research, technological development and demonstration under grant agreement number 602289