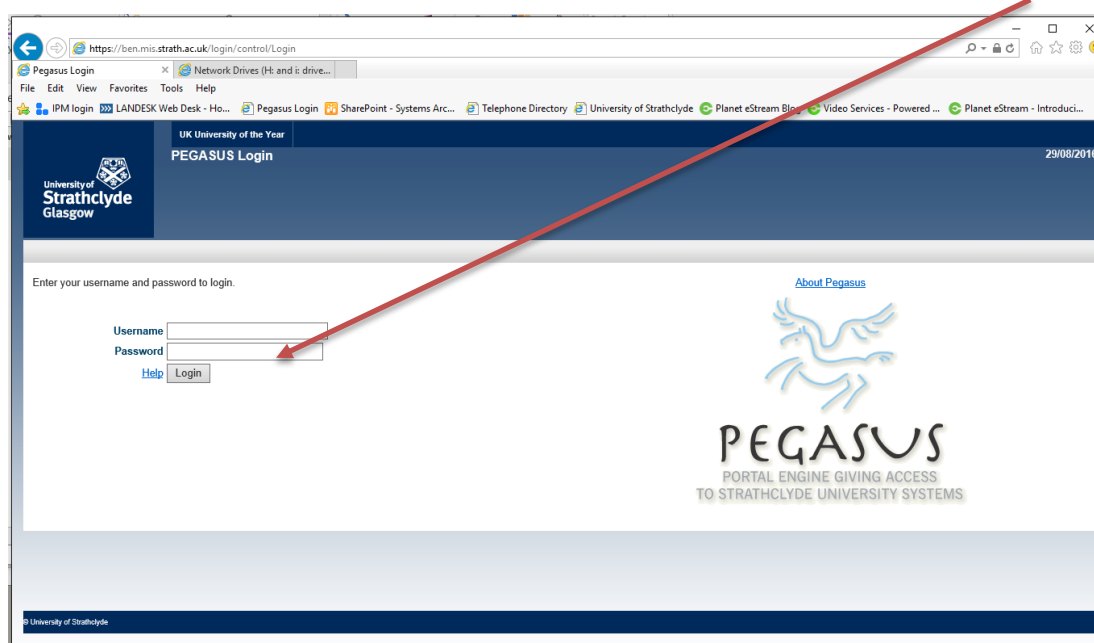


Accessing your Network Drives (H: and i: drive), using Pegasus, off-campus

(Requires Windows and Internet Explorer)

Note : this method of accessing your network drives works both on-campus and off-campus, but it is only recommended for **off-campus** use. There are other, better ways to connect when on-campus. See <http://www.strath.ac.uk/it/filestore/> for details.

Using Internet Explorer, navigate to the Pegasus login page. Enter your DS username and password.

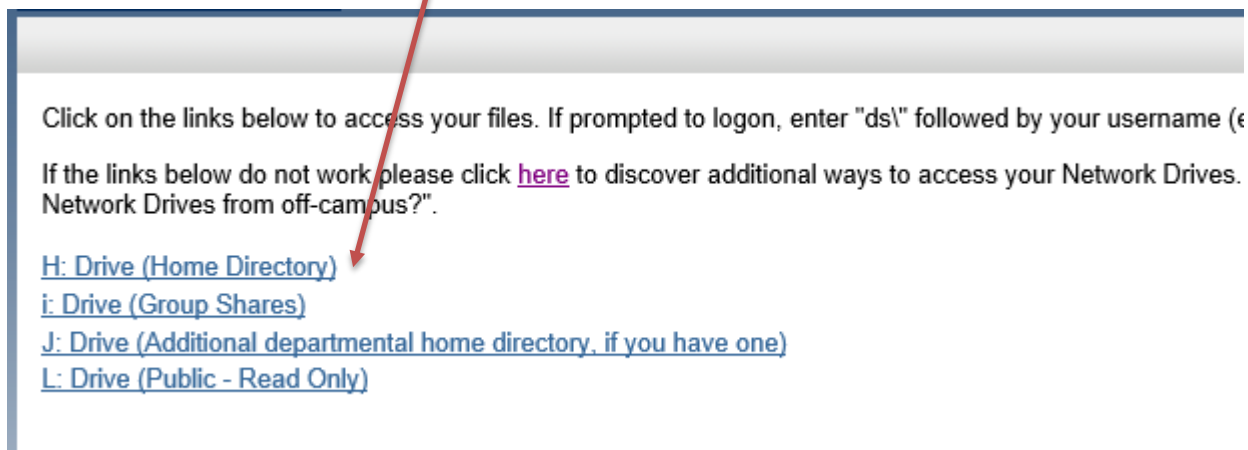


On your home page within the Network Drives window, click on the link to access your Network Drives through Pegasus.

here To continue with accessing your Network Drives through Pegasus, click [here](#)'. A red arrow points from the top right of the window to the 'here' link in the second paragraph." data-bbox="81 749 750 902"/>

YOUR
INFORMATION
SERVICES
YOUR
RESOURCES...

On the opening page select the link of the Network Drive you would like to access (H:, i:, L: Drive).

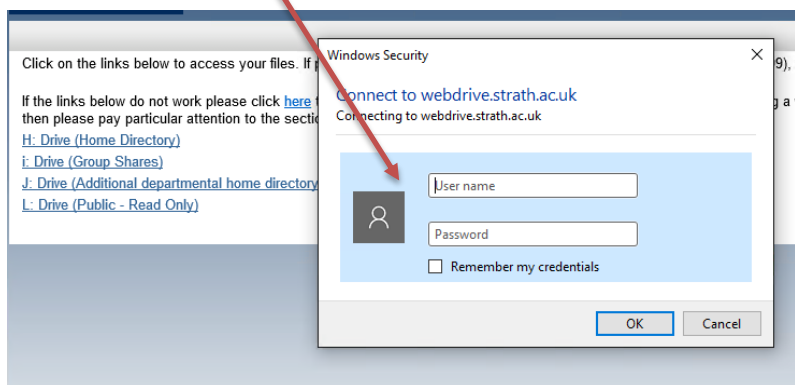


Click on the links below to access your files. If prompted to logon, enter "ds\" followed by your username (e.g. ds\jdoe) and your password.

If the links below do not work please click [here](#) to discover additional ways to access your Network Drives. Network Drives from off-campus?".

- [H: Drive \(Home Directory\)](#)
- [i: Drive \(Group Shares\)](#)
- [J: Drive \(Additional departmental home directory, if you have one\)](#)
- [L: Drive \(Public - Read Only\)](#)

If prompted to login, enter "ds\" followed by your username and then your password.



Windows Security

Connect to webdrive.strath.ac.uk
Connecting to webdrive.strath.ac.uk

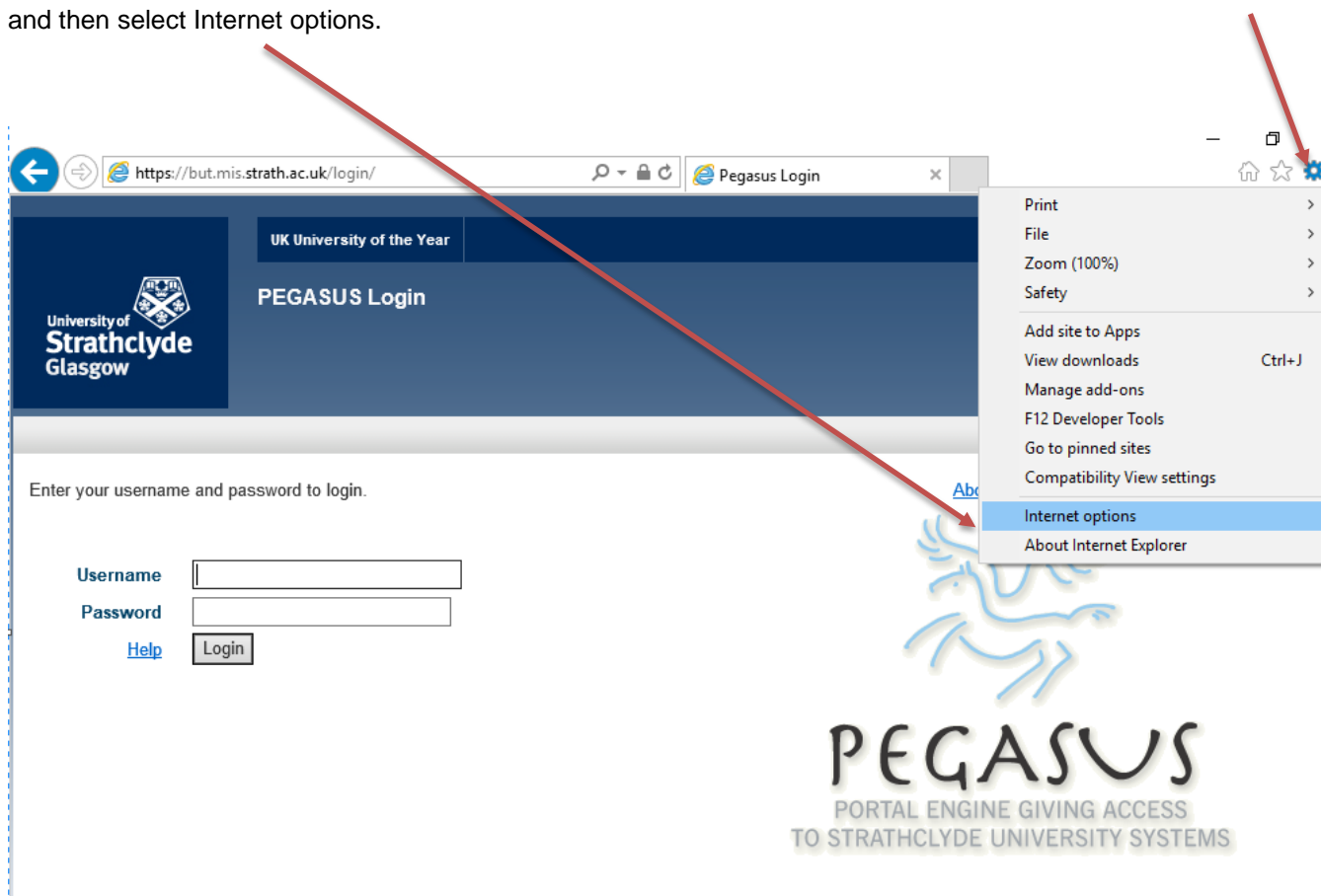
User name
Password
 Remember my credentials

OK Cancel

Your folders should display in the window that opens.

If you are not prompted for your username and password or your folders are not displayed please follow the below steps.

Using Internet Explorer, navigate to the Pegasus login page. At the top right of Internet Explorer click on settings and then select Internet options.



https://but.mis.strath.ac.uk/login/ Pegasus Login

UK University of the Year

University of Strathclyde Glasgow

PEGASUS Login

Enter your username and password to login.

Username

Password

[Help](#)

PEGASUS
PORTAL ENGINE GIVING ACCESS
TO STRATHCLYDE UNIVERSITY SYSTEMS

- Print
- File
- Zoom (100%)
- Safety
- Add site to Apps
- View downloads Ctrl+J
- Manage add-ons
- F12 Developer Tools
- Go to pinned sites
- Compatibility View settings
- Internet options**
- About Internet Explorer

the place of useful learning

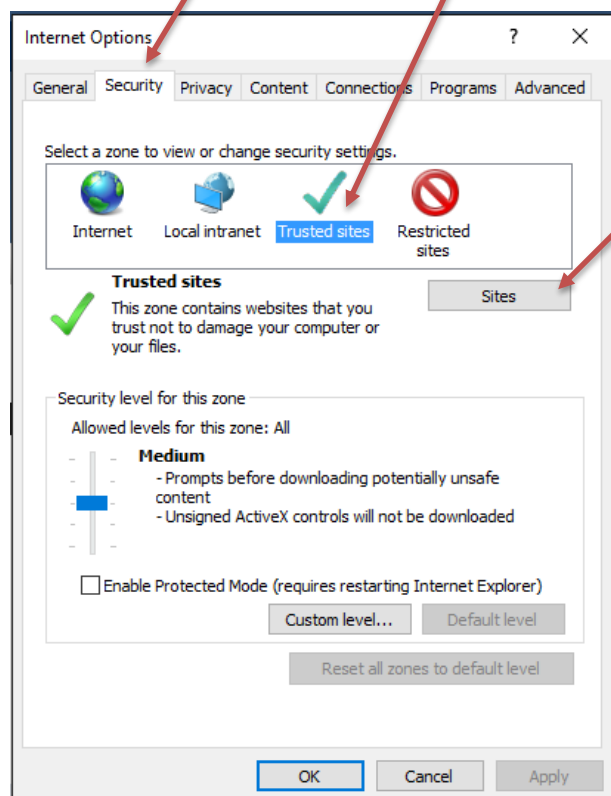
www.strath.ac.uk

University of Strathclyde Glasgow G1 1XQ

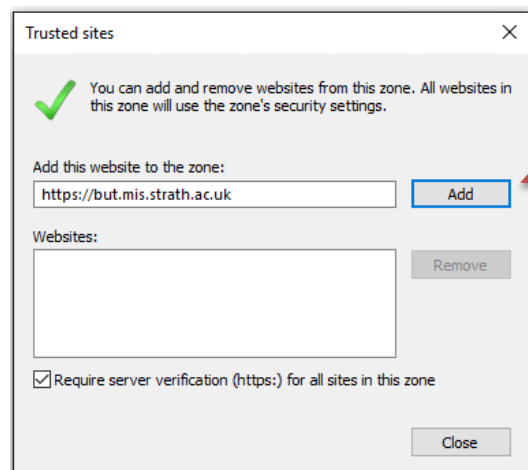
The University of Strathclyde is a charitable body,
registered in Scotland, with registration number SC015263

YOUR
INFORMATION
SERVICES
YOUR
RESOURCES...

Select the Security tab, click on Trusted sites to highlight it and then select Sites.



The URL for Pegasus will automatically be entered in the Add this website to the zone field. Click on Add.



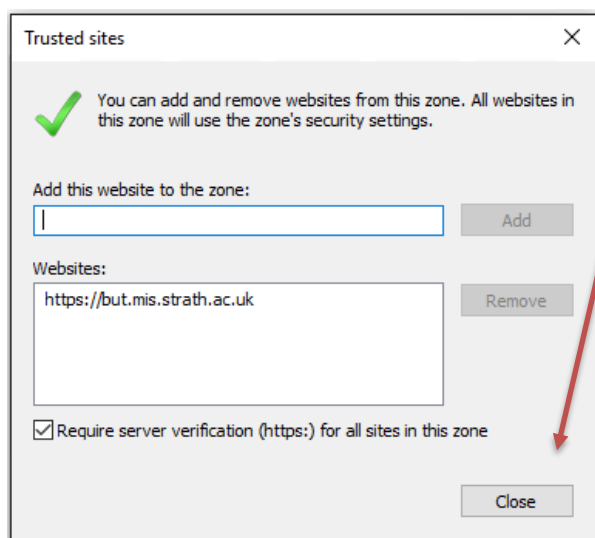
www.strath.ac.uk

University of Strathclyde Glasgow G1 1XQ

The University of Strathclyde is a charitable body,
registered in Scotland, with registration number SC015263

YOUR
INFORMATION
SERVICES
YOUR
RESOURCES...

The URL will then appear in the Websites box. Select close.



Close internet Explorer and then open it again. Login to Pegasus and access your Network Drives using the steps at the beginning of this document.