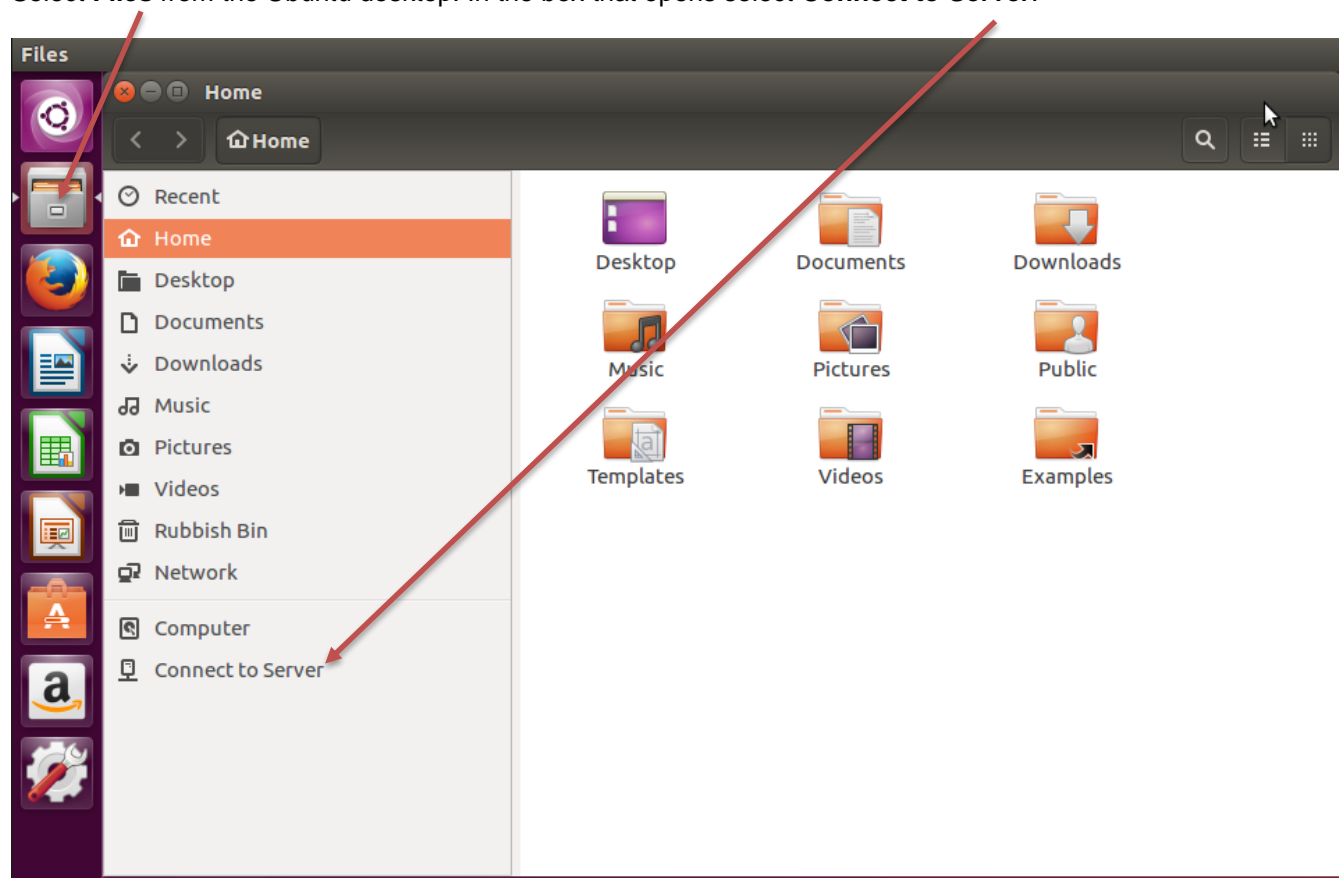


Accessing your Network Drives (H: and i: drive) on Ubuntu, using WebDrive, off-campus

Note : Webdrive works both on-campus and off-campus, but it is only recommended for **off-campus** use. There are other, better ways to connect when on-campus. See <http://www.strath.ac.uk/it/filestore/> for details.

Select **Files** from the Ubuntu desktop. In the box that opens select **Connect to Server**.



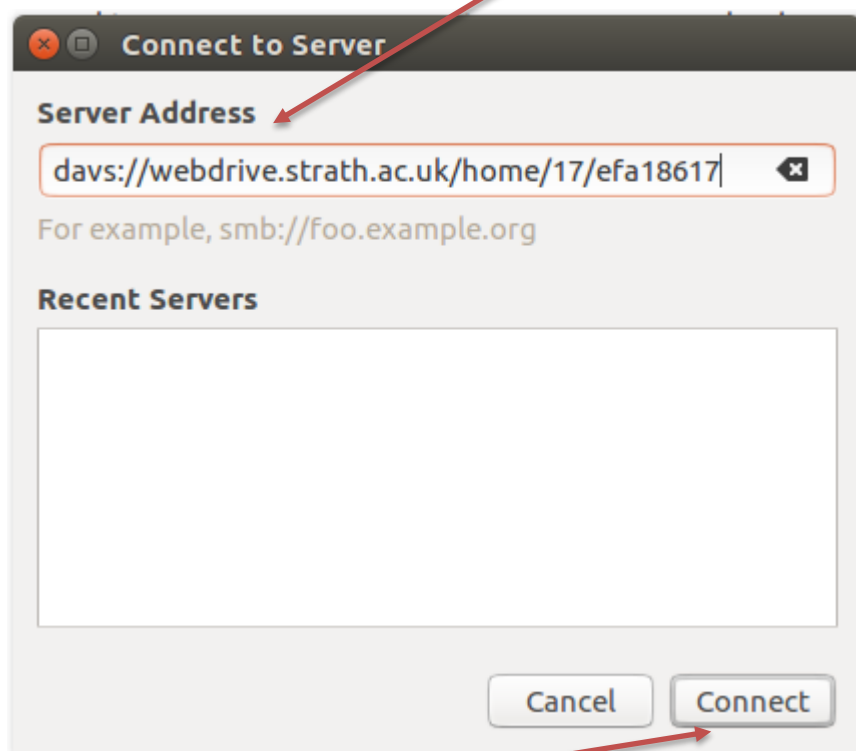
Enter the **Server Address** for the drive you want to connect to.

For your H: Drive, enter the address in the form below;

<davs://webdrive.strath.ac.uk/home/> last two digits of your username / username.

Example;

<davs://webdrive.strath.ac.uk/home/17/efa18617>



Select **Connect**.

Or, for your i: Drive, enter the below address;

<davs://webdrive.strath.ac.uk/idrive>

Or, for your L Drive, enter the below address;

<davs://webdrive.strath.ac.uk/ldrive>

the place of useful learning

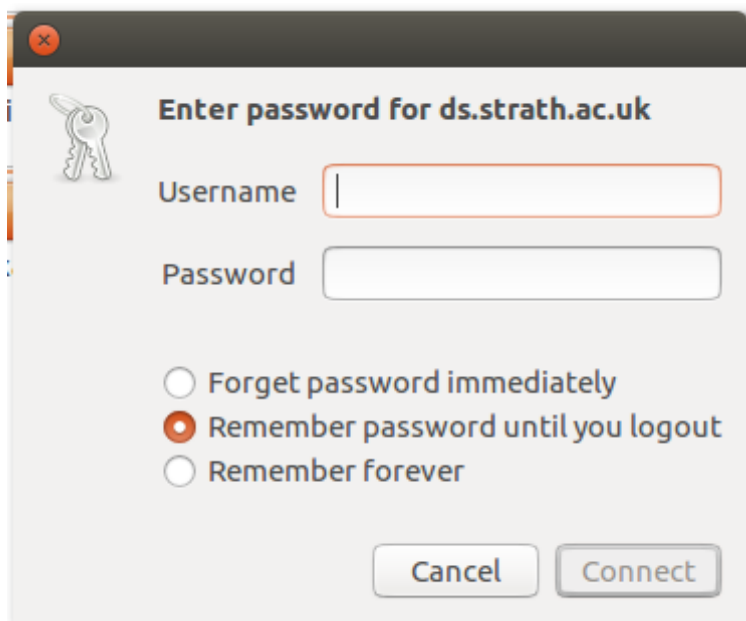
www.strath.ac.uk

University of Strathclyde Glasgow G1 1XQ

The University of Strathclyde is a charitable body,
registered in Scotland, with registration number SC015263

YOUR
INFORMATION
SERVICES
YOUR
RESOURCES...

When prompted to logon, enter "**ds**" followed by your username & then your password. Select **Connect**.



The image shows a Windows-style dialog box titled "Enter password for ds.strath.ac.uk". It features a key icon on the left. There are two input fields: "Username" and "Password". Below the fields are three radio button options: "Forget password immediately", "Remember password until you logout" (which is selected), and "Remember forever". At the bottom are two buttons: "Cancel" and "Connect".

Your folders should display in the window that opens.

YOUR
INFORMATION
SERVICES
YOUR
RESOURCES...

the place of useful learning

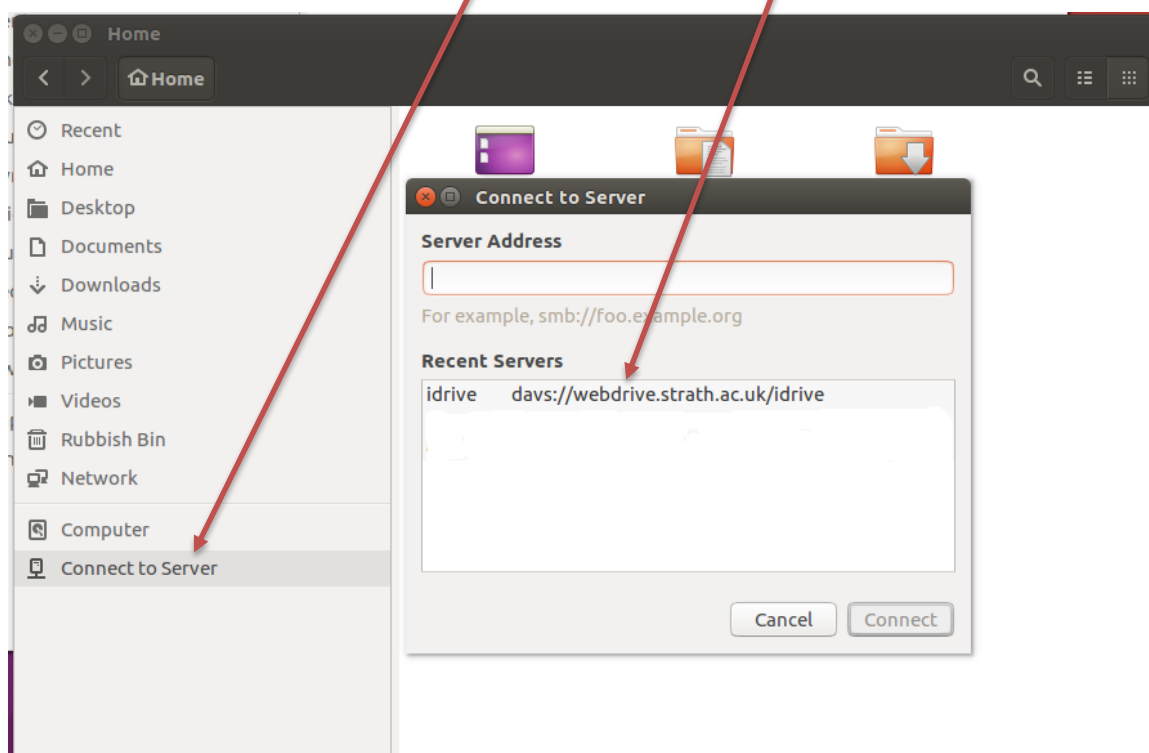
www.strath.ac.uk

University of Strathclyde Glasgow G1 1XQ

The University of Strathclyde is a charitable body,
registered in Scotland, with registration number SC015263

Your Network drive will display within **Connect to Server** as a **Recent Server** each time you log on to your computer.

Select your Network drive from the **Recent Servers** list.



Select the Network drive you wish to connect to. The above example displays an i: drive connection.

When prompted to logon, enter "**ds**" followed by your username & then your password. Select **Connect**.



YOUR
INFORMATION
SERVICES
YOUR
RESOURCES...

the place of useful learning

www.strath.ac.uk

University of Strathclyde Glasgow G1 1XQ

The University of Strathclyde is a charitable body,
registered in Scotland, with registration number SC015263