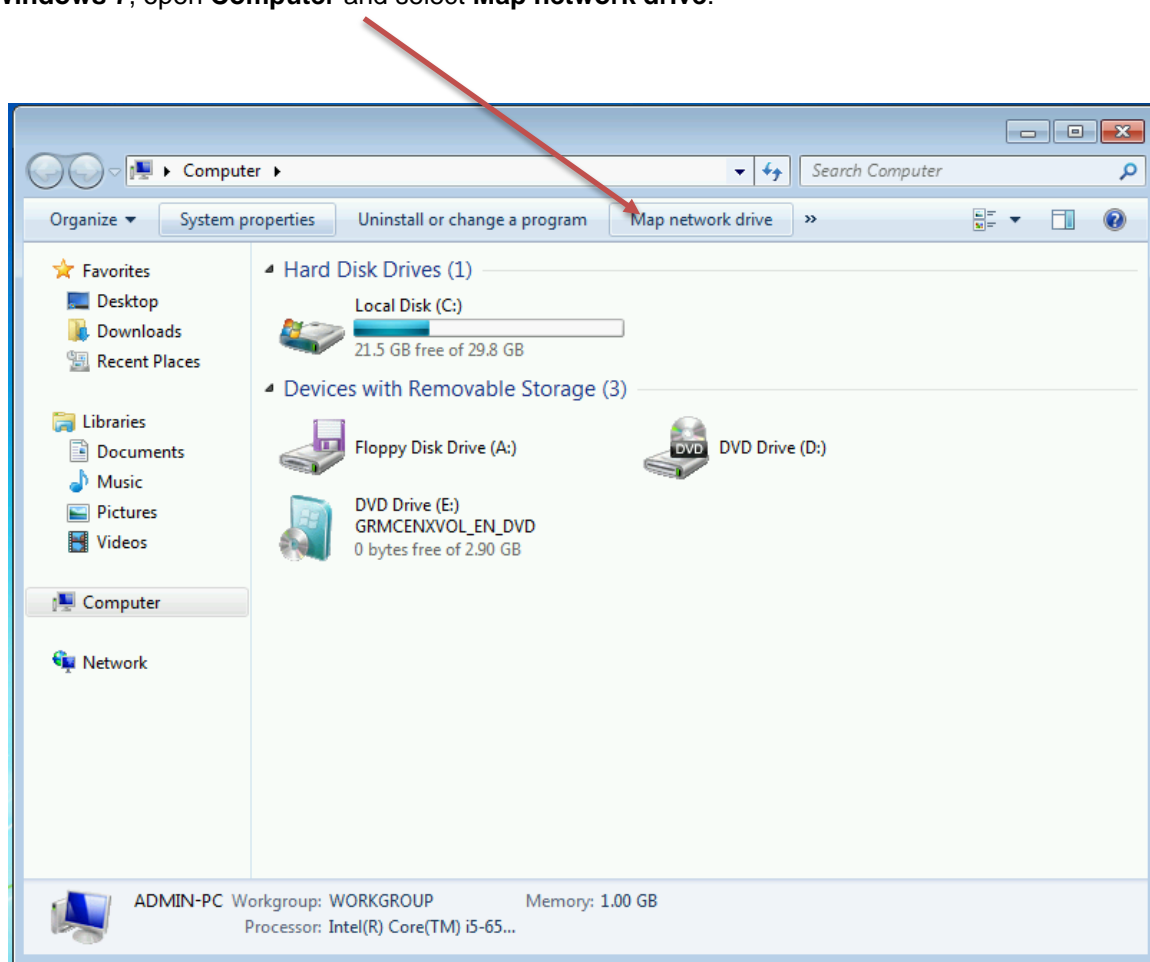


## Accessing your Network Drives (H: and i: drive) on Windows, using Webdrive, off-campus

**Note** : Webdrive works both on-campus and off-campus, but it is only recommended for **off-campus** use. There are other, better ways to connect when on-campus. See <http://www.strath.ac.uk/it/filestore/> for details.

If you're using **Windows 7**, open **Computer** and select **Map network drive**.



YOUR  
INFORMATION  
SERVICES  
YOUR  
RESOURCES...

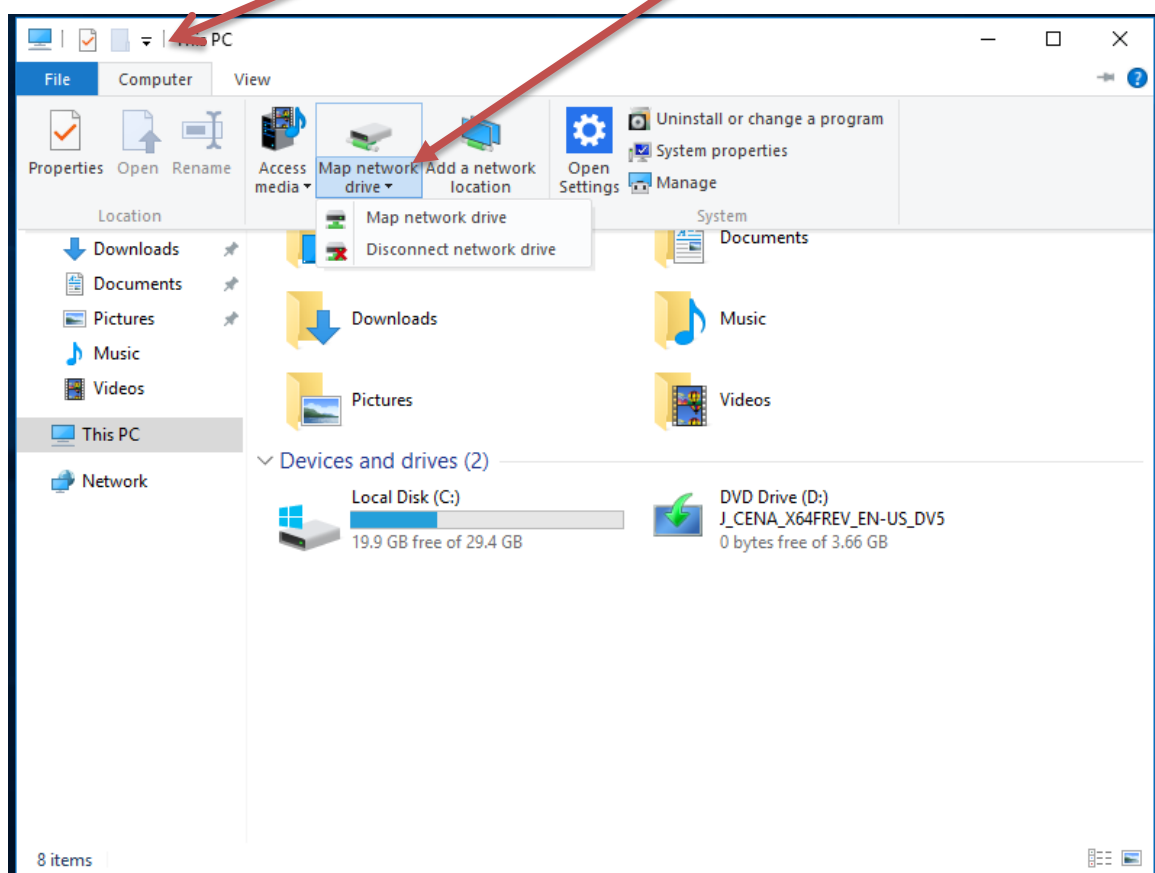
the place of useful learning

[www.strath.ac.uk](http://www.strath.ac.uk)

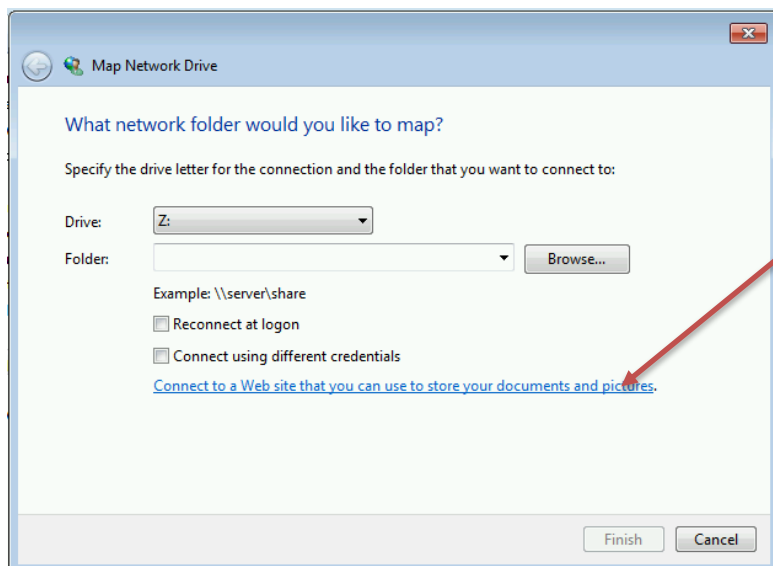
University of Strathclyde Glasgow G1 1XQ

The University of Strathclyde is a charitable body,  
registered in Scotland, with registration number SC015263

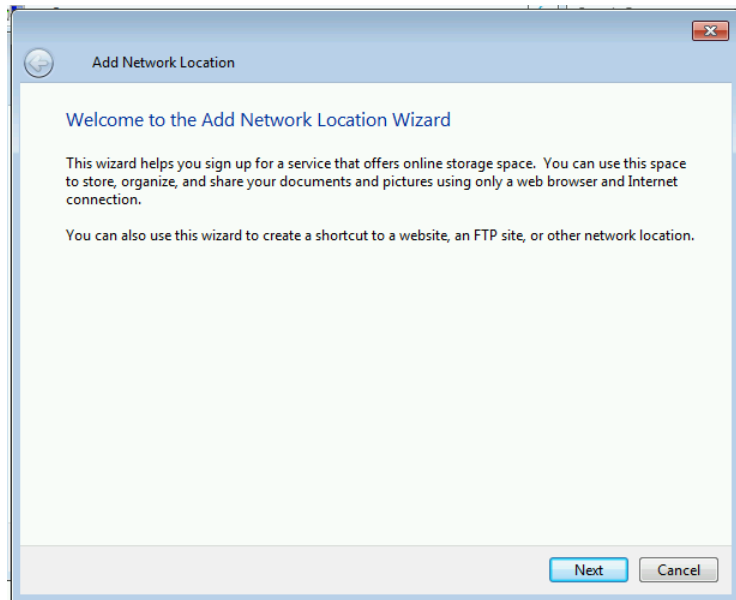
Or, if you're using **Windows 10**, open **This PC** and select **Computer** and then **Map network drive** from the ribbon at the top of the window.



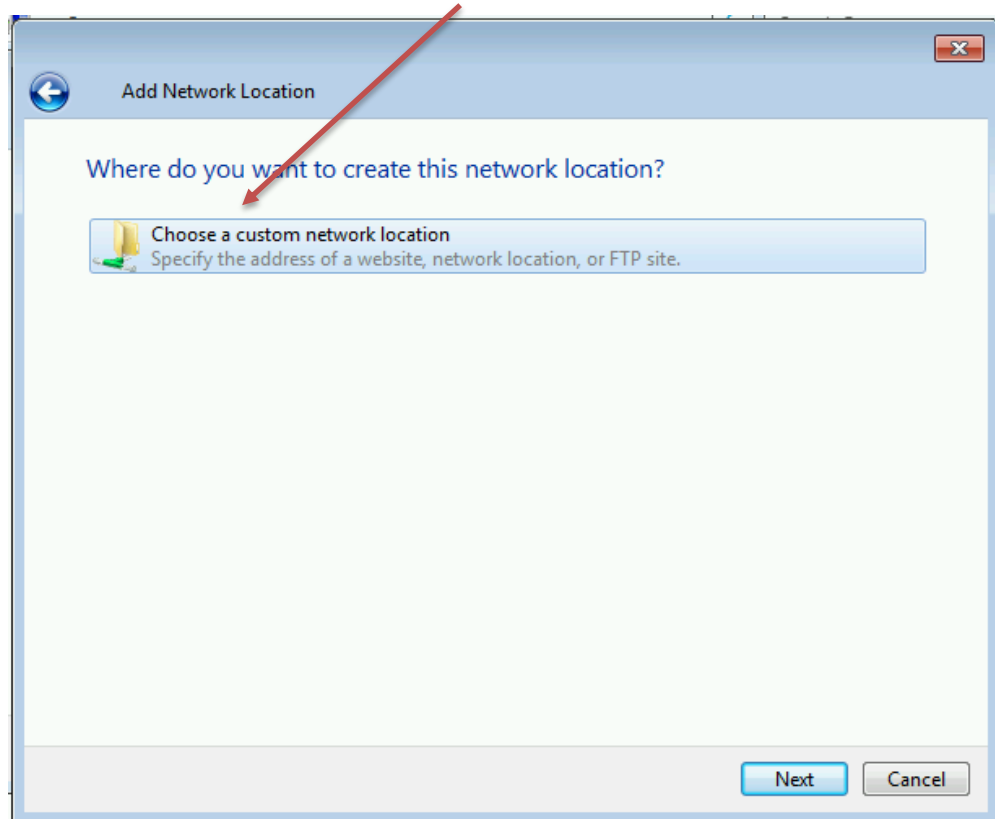
On the next screen select **Connect to a Web site you can use to store your documents and pictures.**



Select **Next** for the **Welcome to the Add Network Location Wizard.**



Select **Choose a custom network location**.



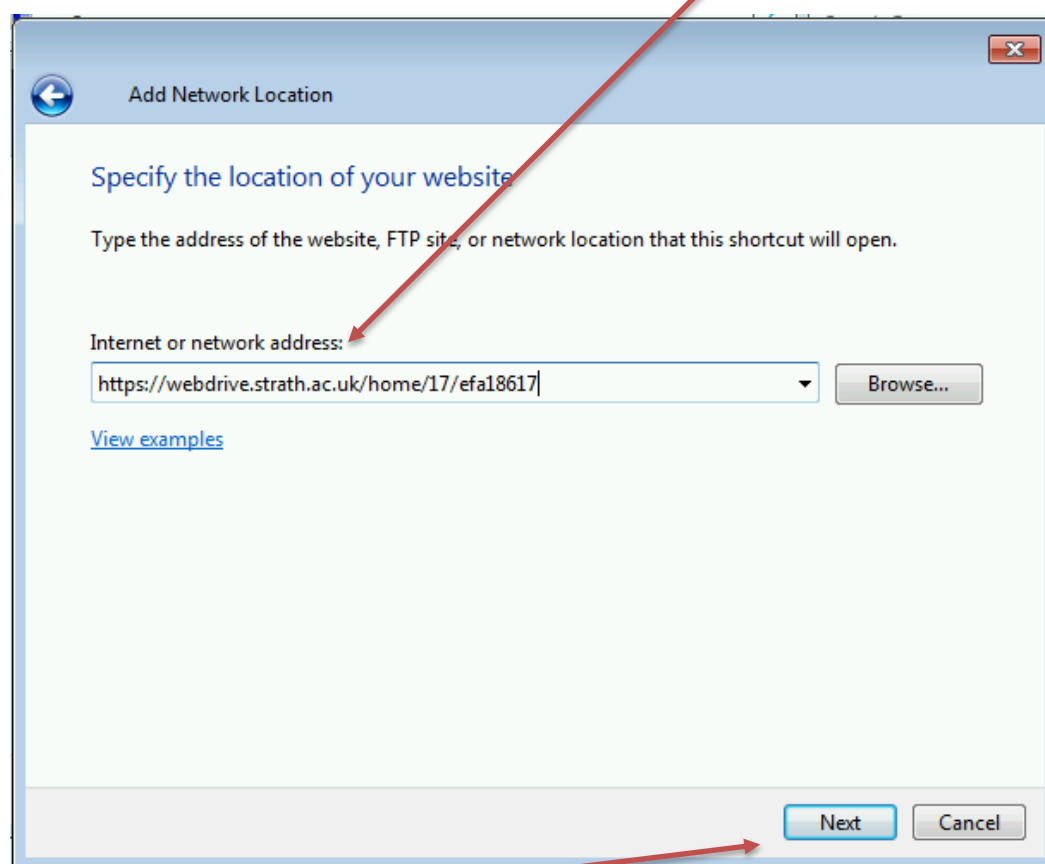
In the **Internet or Network address** field enter the relevant URL, for the drive you want to connect to.

**For your H: Drive**, enter the URL in the form below;

<https://webdrive.strath.ac.uk/home/> last two digits of your username / username.

Example;

<https://webdrive.strath.ac.uk/home/17/efa18617>



Select **Next**.

**Or, for your i: Drive**, enter the below URL,

<https://webdrive.strath.ac.uk/idrive>

**Or, for your L: Drive**, enter the below URL;

<https://webdrive.strath.ac.uk/ldrive>

the place of useful learning

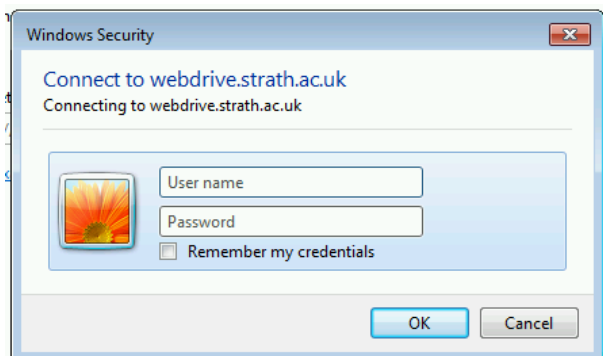
[www.strath.ac.uk](http://www.strath.ac.uk)

University of Strathclyde Glasgow G1 1XQ

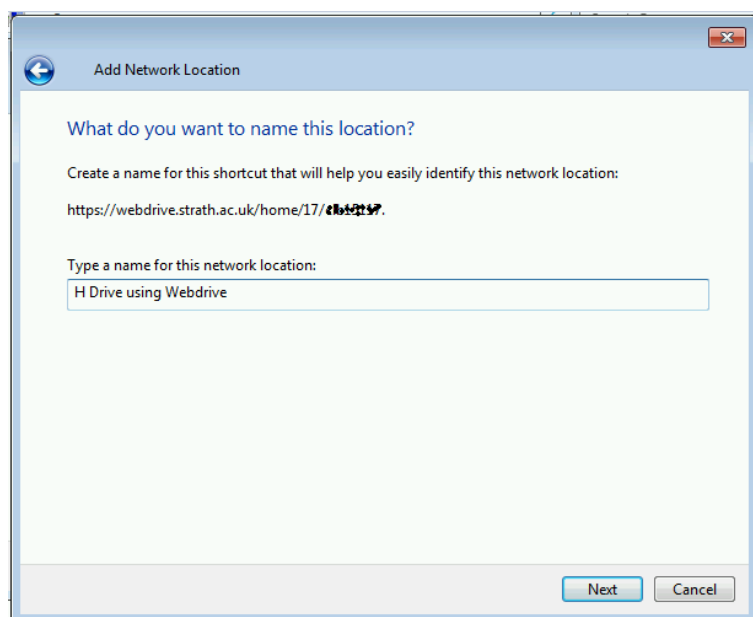
The University of Strathclyde is a charitable body,  
registered in Scotland, with registration number SC015263

YOUR  
INFORMATION  
SERVICES  
YOUR  
RESOURCES...

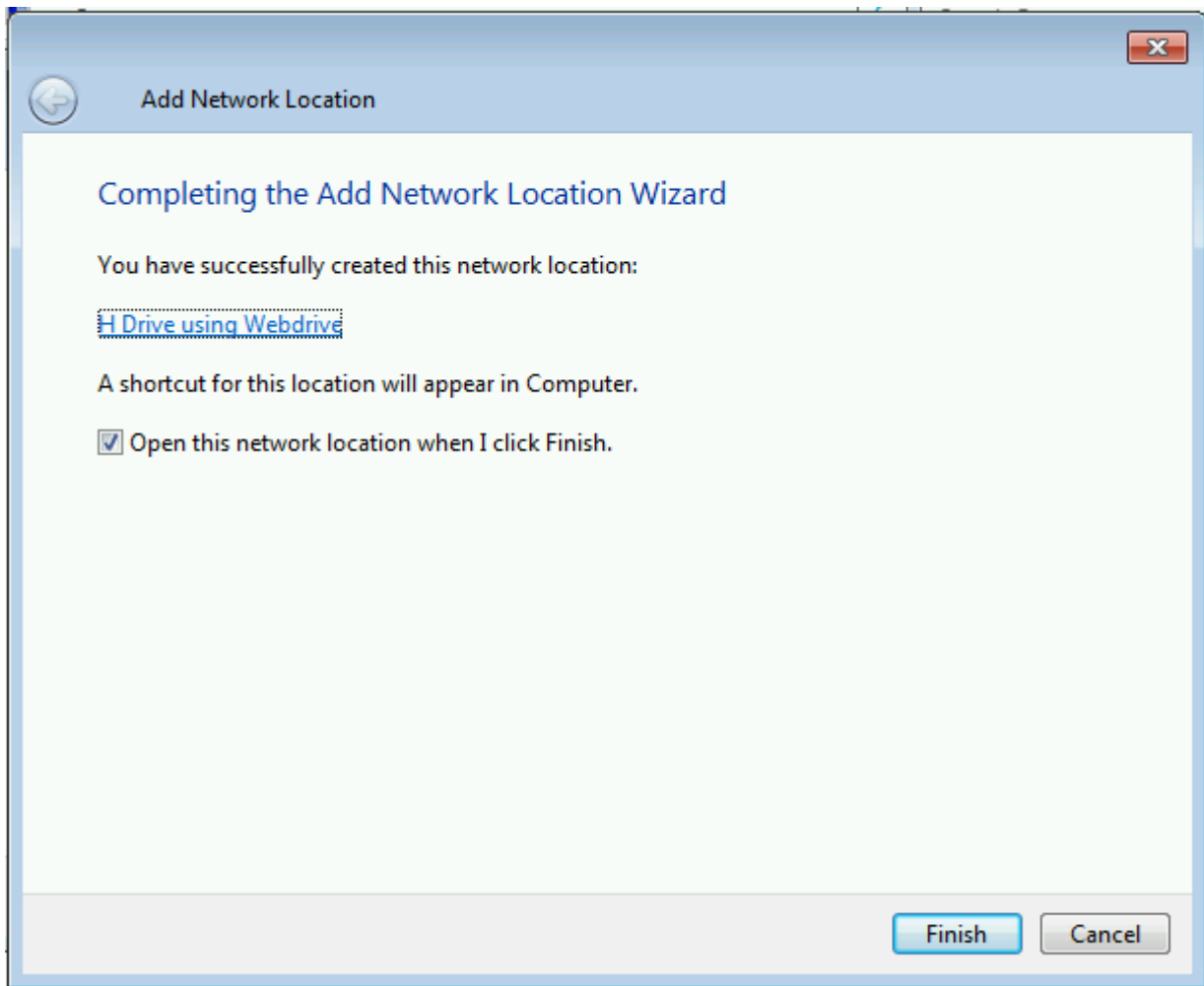
When prompted to logon, enter "**ds\**" followed by your username & then your password. Select **OK**.



Give your location a name. Example, "H Drive using Webdrive". Select **Next**.

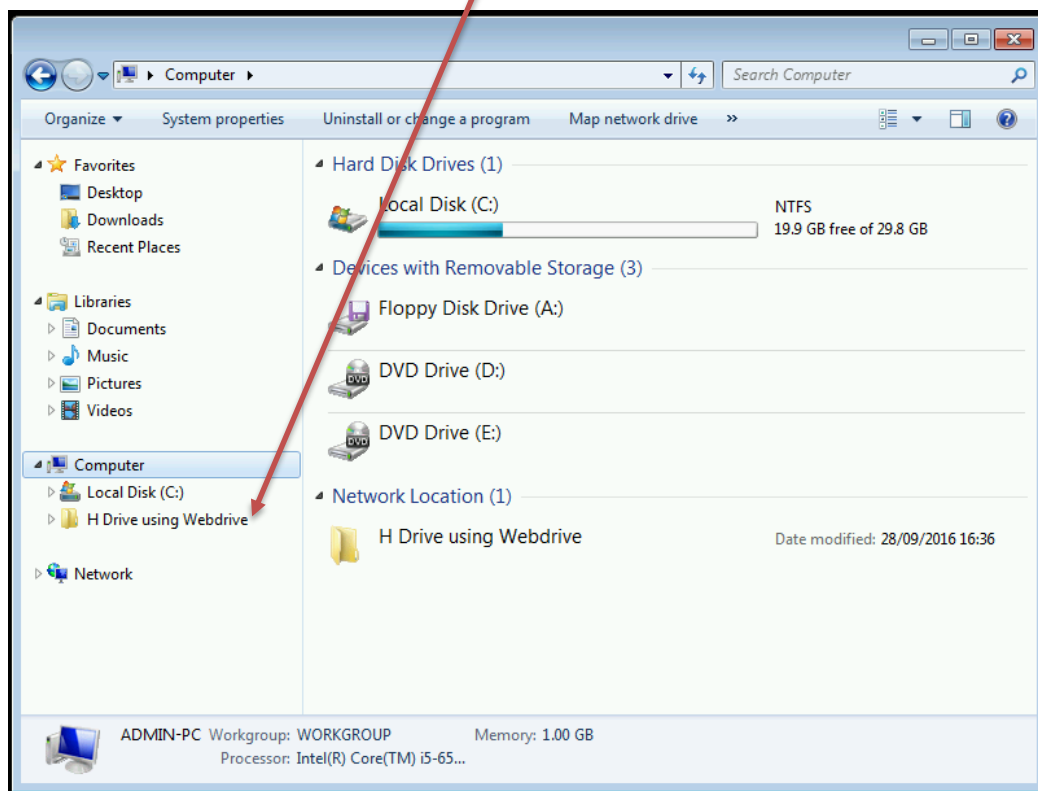


Select **Finish**.



Your files and folder will display in the opening window.

Your Network drive will display as a folder within **Explorer** each time you log on to your computer.



When prompted to logon, enter "**ds\**" followed by your username & then your password. Select **OK**.

