



Centre for Lifelong Learning

# Certificate of Professional Development in Workplace Health



**Healthy  
Working  
Lives**



University of  
**Strathclyde**  
**Glasgow**

# Certificate of Professional Development in Workplace Health



This professional development course in Workplace Health is offered by the Centre for Lifelong Learning, University of Strathclyde in collaboration with NHS Health Scotland and the Scottish Centre for Healthy Working Lives, as part of their commitment to continuing professional development.

The aim of the course is to increase participants' knowledge and critical understanding of workplace health matters. The course is unique in that it integrates health and safety, occupational health and health promotion and has a major objective of promoting collaboration between different disciplines.

## Who should attend?

The course has been designed for people working in a range of jobs and will appeal particularly to those involved in occupational health, health promotion, health and safety, trade union representation and human resources. General Managers with responsibility for workplace health issues will find that this course brings

together the key elements they need to cover. The course is also suitable for those wishing to broaden their occupational health, safety and wellbeing knowledge in relation to their workplace.

## Course Content

This course has been designed to allow students to study by distance learning through the use of online course content with tutor support using the University of Strathclyde virtual learning environment, Myplace. The course will involve around 180 hours of study over an 8 month period, with appropriate holiday intervals. While primarily a distance learning course, there are 2 opportunities (non compulsory) for those able to travel to the University to meet with the tutor team and fellow students.

## Learning and Assessment

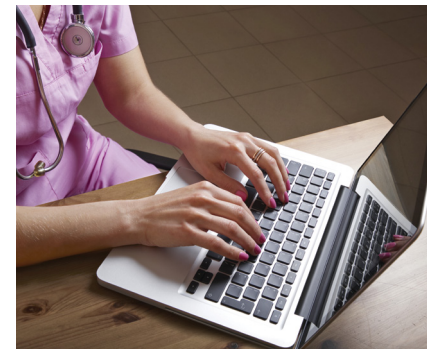
Student performance is assessed by means of a number of study unit activities and a final assignment based on a case study. There are no summative written



examinations. The course encourages interactive learning, incorporating on-line group discussion and activities.

## Entry Criteria

The normal entry requirements for this course is a first degree or equivalent work experience. Access to a broadband internet connection and a basic working knowledge of computers are essential for participation.



## Programme Study Units

1. Introduction
2. Shareholders: the main players in workplace health
3. Management of health and safety
4. Occupational health services
5. Health promotion
6. Employability
7. Attendance management
8. Rehabilitation
9. Sustainability
10. Planning
11. Evaluation
12. Organisations, systems and management
13. Social marketing
14. Case study



## Course Fees

The course fee is £695 (VAT exempt). Sponsorship may be available to applicants working in the NHS, voluntary sector and Trades Union representatives. Individual Learning Accounts may be available to eligible applicants.



## Scottish Centre for Healthy Working Lives (SCHWL)

The Scottish Centre for Healthy Working Lives is tasked with helping employers and all its partner agencies come together to create a much healthier and more motivated workforce by offering free, confidential workplace visits, practical information and advice and a structured Award Programme. Whatever people want to do for a living and wherever they are in Scotland, it is the vision of Healthy Working Lives to provide the opportunity to work in ways that allow workers not only to sustain, but also improve, their health and well-being.

## University of Strathclyde Centre for Lifelong Learning

The Centre for Lifelong Learning offers a wide range of professionally recognised Continuing Professional Development (CPD) programmes, focusing on the development of knowledge and understanding for professional competence to practise.

Distance learning opportunities are available in the form of modular postgraduate programmes and stand-alone certificates of professional development in a variety of health and safety related topics.

## Contact

To find out about course start dates and registration, please contact:

Centre for Lifelong Learning  
University of Strathclyde  
Graham Hills Building  
40 George Street  
Glasgow G1 1QE  
Tel: 0141 548 4828  
Fax: 0141 553 1270  
Email: [louise.carbry@strath.ac.uk](mailto:louise.carbry@strath.ac.uk)  
<http://www.strath.ac.uk/cll/cpd/healthsafety>

