

Healthy Settings Approach in Chikhwawa District

Dr Tracy Morse
Scotland Chikhwawa Health Initiative

SCHI programme (2006 – 2016)

- Collaborative programme
 - University of Strathclyde
 - UNIMA – Polytechnic
 - Chikhwawa District Health Office
- Community based preventive health programmes
 - WASH
 - Communicable disease prevention
 - Maternal health
 - Health access
- Scottish Government Funding



Who is the SCHI Team

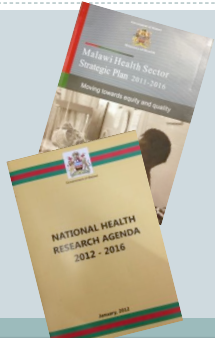
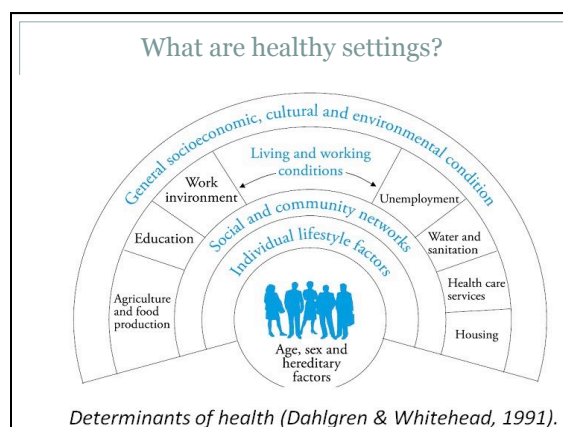
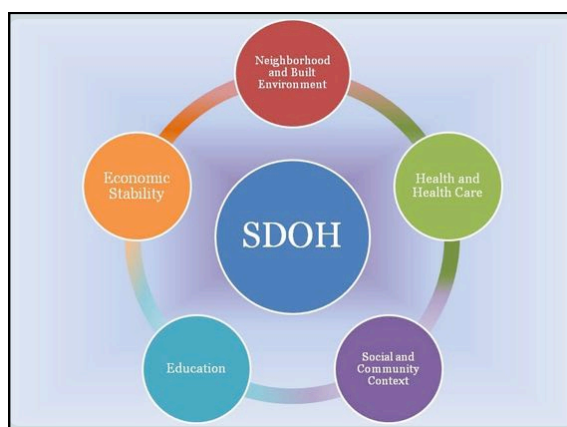
- Dr Tracy Morse – Project manager
- Mr Save Kumwenda – District coordinator
- Mr Scatter Makumbi – Field Officer

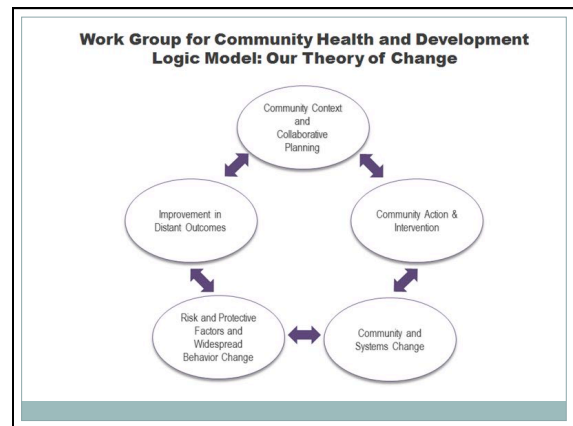
But we will also be working with:

- Members of local government and health offices
- Local and religious leaders
- Colleagues from University of Malawi and University of Strathclyde.
- Other relevant organisations and stakeholders

Healthy Settings and Malawi

- Key health problems in communities are preventable
- HSSP 2011 – 2016 - the need for effective preventive measures
- Healthy settings approach



Cross cutting barriers to sustainable health improvements

- Lack of collaboration between community structures
- Poor support for communities, e.g. HSAs
- Effective identification of community needs?
- Community networking and bonding

Targeted Areas

- Mfera Health Facility Static Catchment:
 - Population = 7500
 - Households = 1567
 - Communities (n = 18)
 - Markets (n = 2)
 - Schools (n = 3)
 - Health facilities (n = 1)

Communities

- Chinkole
- Jimuloja
- Khumbulani
- Liwonde
- Solomoni
- Dzimphtusi
- Mwazika
- Patasani
- Chimoto
- Ndelema
- Thukuta
- Kaptein
- Mpezeni
- Lyson
- Mpokonyola
- Kalonga
- Matumula
- Skenala

Schools and Markets

- Nkhudzi Primary School
- Mfera Primary School
- Mfera Secondary School
- Mfera Market
- Dembo Market

Community driven development

- **Understanding who we are working with:**
 - Community structures
 - Bonding
 - Needs and expertise
 - Resources
 - Effective prioritization and profiling methods
- **Development of action plans**



Action plans and measuring impact

- **Communities responsible for their own action plans for the 2 years.**
- **Build capacity with community members and stakeholders where needed.**
- **Monitoring and evaluation of all activities and outcomes.**