

Facts and Figures 2014/15



A Leading International
Technological University 02

Our Alumni 08

Research and Knowledge Exchange 10

Widening Access 14

Our Students 16

Graduate Careers 20

Partnerships 22

Student Numbers 26

University Income 28

Staff Numbers 28



Established more than 200 years ago ‘for the good of mankind’, the University of Strathclyde is renowned for excellent teaching, research and strong links with industry, government and business.

Our roots can be traced back to 1796, when Professor John Anderson’s legacy established a ‘place of useful learning’ — the only higher education institution to be created in Scotland during the Enlightenment. This tradition remains at the heart of our ethos today, as a leading international technological university.

We are situated in the heart of Glasgow — one of the UK’s largest cities — and we have a vibrant, international community including more than 20,000 students from over 100 nations, with overseas students accounting for over 15% of the total.

A Leading International Technological University



Our international community of scholars collaborates with a range of leading universities including Stanford, New York and MIT Universities, Nanyang Technological University in Singapore, Tsinghua University in Beijing and Hong Kong University of Science and Technology.



We also benefit from education and research partnerships with a large community of excellent universities across Europe.



We employ almost 3,400 people, supporting nearly 8,000 jobs in Glasgow, 13,000 in Scotland and 13,000 in the rest of the UK.



The impact of Scottish tourism associated with Strathclyde is estimated at £43 million GVA, supporting more than 2,000 jobs.

We are part of a dynamic, international community of scholars developing solutions to global challenges.



Our students and staff are based in four faculties: Engineering, Science, Strathclyde Business School and Humanities & Social Sciences.

.....

In 2012/13, we were the first Scottish institution to be named Times Higher Education UK University of the Year. In 2013/14, we were named UK Entrepreneurial University of the Year — again, a first for a Scottish university.

.....

We are building for the future and are investing £350 million over 10 years to transform our dynamic and digital campus.

.....

We are rated as a Five Star institution by QS, the compiler of the prestigious QS World University Rankings. We scored 100% in 25 categories, including academic reputation, spin-off companies and international diversity.



Our Alumni

The class of 2014 will join our 150,000-strong alumni community – a group of extraordinary people whose work is having a major impact around the globe.

.....

Some of our acclaimed former students include:

John Logie Baird – inventor of the world's first working television

James 'Paraffin' Young – the driving force behind the creation of today's oil refinery industry

James Blyth – built the world's first electricity-producing wind turbine

Henry Faulds – originator of fingerprint identification

Robert Thom – inventor of water filtration systems

.....

Notable alumni contributing to society today include Aileen McGlynn OBE, Paralympic cycling gold medallist; Jim McColl OBE, Chairman and CEO of Clyde Blowers; and Afzal Khushi, Managing Director of international outdoor clothing brand, Trespass.





Research and Knowledge Exchange

Strathclyde is a research-intensive university responding to global challenges. We are making major contributions towards improving health, transforming energy, setting new standards in manufacturing, and shaping future cities.

.....

Our unique research collaborations are set to almost double in the next decade – meaning Strathclyde is set to contribute nearly £1.4 billion to the Scottish economy by 2021/22.

.....

We are ranked fifth in the UK with Cambridge for spin-out companies created in the past 10 years. We have formed more than 50 companies making sales of around £80 million per year and employing around 800 people.

.....

We attracted more than £50 million in external research funding in 2013/14.

.....

We are home to the UK headquarters and the UK research hub of Fraunhofer, Europe's largest contract research organisation.

Our leading-edge centres, including our new £89 million Technology and Innovation Centre, are transforming the way universities, businesses and public sector agencies work together. This Triple Helix approach supports our students, our partners, and the global communities we serve.

Widening Access

Widening participation in education is at the heart of our University's values and principles, and can be traced back to the 18th century when we provided classes in natural philosophy – or physics, as it is known today – to the working men and women of Glasgow.

Today, we aspire to increase opportunities for people from a diverse range of backgrounds through our contextual admissions approach, to promote the life-transforming experience that study and success at university can bring.

.....

We offer a wide range of programmes to reach out to our schools, colleges and communities, including a summer school, mentoring schemes, a literacy clinic, and an Engineering Academy – a collaboration with industry to provide a pathway to engineering degrees for college students.

.....

We are an 'Age-Friendly University' and host Scotland's first Children's University. Through our Centre for Lifelong Learning, we have also been one of the foremost providers of education to people of all ages for some four decades.

.....

We admit more gifted entrants from the most challenged communities than any other Scottish research-intensive university. More than one in ten of this group enrolling at university in Scotland come to Strathclyde.





Our Students

The University offers a flexible, innovative learning environment where students enjoy a first-class experience. We are known for our excellent industrial placements, scholarships and study abroad opportunities, and we are committed to producing graduates who are ready for employment.

.....

Strathclyde is home to one of Scotland's largest students' unions and the NUS University Students' Association of the Year 2014.

.....

Our student satisfaction rating has risen by 3% in the last year to 89%, placing us above the UK average, according to the National Student Survey 2014.

.....

Our five-floor library has more than one million volumes and offers access to 540,000 electronic books.

.....

Strathclyde has nearly 1,500 student volunteers who have clocked up more than 9,000 volunteer hours.

.....

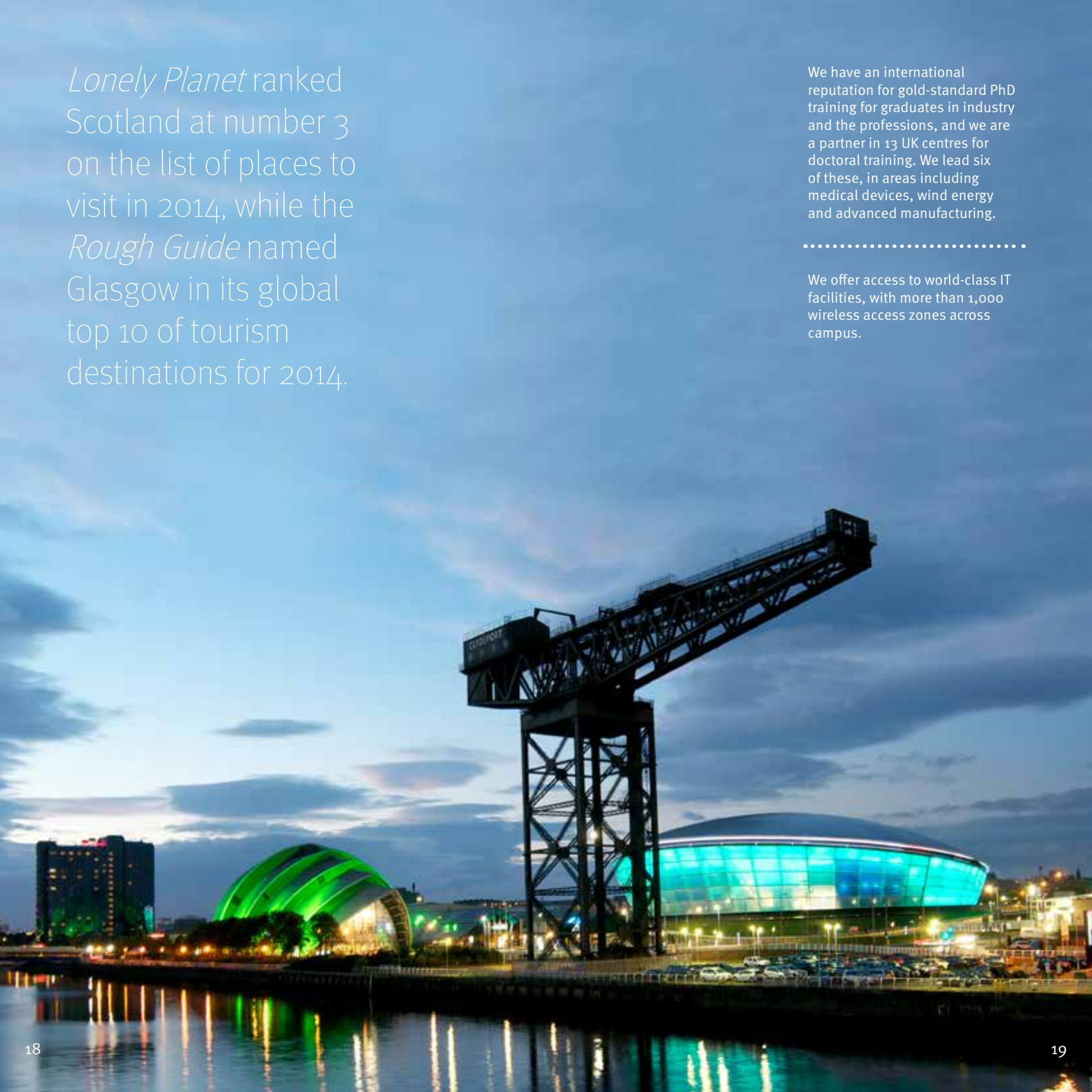
There are more than 100 clubs and societies at Strathclyde, including nearly 50 teams and sports clubs.

Lonely Planet ranked Scotland at number 3 on the list of places to visit in 2014, while the *Rough Guide* named Glasgow in its global top 10 of tourism destinations for 2014.

We have an international reputation for gold-standard PhD training for graduates in industry and the professions, and we are a partner in 13 UK centres for doctoral training. We lead six of these, in areas including medical devices, wind energy and advanced manufacturing.

.....

We offer access to world-class IT facilities, with more than 1,000 wireless access zones across campus.



Graduate Careers

Strathclyde graduates are working across the globe, holding positions of seniority and influence in business, healthcare, academia, industry, politics and the media.

More than 93% are in work or further study six months after their graduation.

We are in the top 20 in the UK for universities targeted by the largest number of top employers.

According to the UK Graduate Careers Survey 2014, the majority of our final-year students anticipate securing a graduate job – the highest level in Scotland and the third-highest in the UK.

Our dedicated Careers Service works extensively with students to enhance their employability skills and graduate attributes, helping them to choose and manage their careers. Ongoing feedback from employers demonstrates that our students consistently stand out as attractive recruits.

In 2013/14, our Careers Advisers delivered over 300 presentations on employability and the graduate labour market to nearly 16,000 students, while 2,500 students accessed one-to-one careers advice. Nearly 5,000 students and 200 employers participated in our many careers fairs.





Partnerships

Strathclyde is renowned for its unique partnerships with other leading universities, businesses and key public sector agencies. Our vision as a leading international technological university has attracted support from global companies.

.....

The Universities of Strathclyde and Surrey have been selected as preferred partners with the UK Government and the National Physical Laboratory in a collaboration expected to help shape the scientific priorities of the UK.

.....

We are a member of four of the UK's Catapult centres, which are designed to transform 'high potential' ideas into new products and services to generate economic growth. This work is supporting areas including high value manufacturing, energy, satellite applications and the development of future cities.

.....

The Industrial Biotechnology Innovation Centre (IBioIC), hosted at Strathclyde, is forecast to increase industrial biotech turnover by up to £3 billion by 2030, create 1,500 jobs within five years and put Scotland at the forefront of a global transformation.

.....

We are a founding member of the world's first International Max Planck Partnership, which is boosting the future development of new quantum technologies and fundamental science.

The Strathclyde-led Centre for Innovative Manufacturing in Continuous Manufacturing and Crystallisation (CMAC) is revolutionising the way pharmaceuticals and medicines are made.

.....

We are the exclusive European partner university for the South Korean government's global research and commercialisation programme.

Our Advanced Forming Research Centre, which sets new standards in aerospace design and manufacturing, has doubled in size this year to meet industry demand.





Students 2013/2014

	Undergraduate	Postgraduate Taught	Postgraduate Research	Total	
Faculty of Engineering	3,505	980	640	5,125	25%
Faculty of Humanities & Social Sciences	3,575	2,690	160	6,425	32%
Faculty of Science	3,200	265	495	3,960	20%
Strathclyde Business School	1,960	2,615	150	4,725	23%
Total	12,240	6,550	1,450	20,235	
	60%	32%	7%		
	Scotland	RUK	EU	Overseas	Total
Faculty of Engineering	3,490	225	540	870	5,125
Faculty of Humanities & Social Sciences	5,940	190	170	125	6,425
Faculty of Science	3,110	150	210	485	3,960
Strathclyde Business School	2,055	180	575	1,915	4,725
Total	14,595	745	1,495	3,395	20,235
	72%	4%	7%	17%	

Note: In addition to our core student population, we welcomed more than 950 visiting students and 1,800 lifelong learning students.

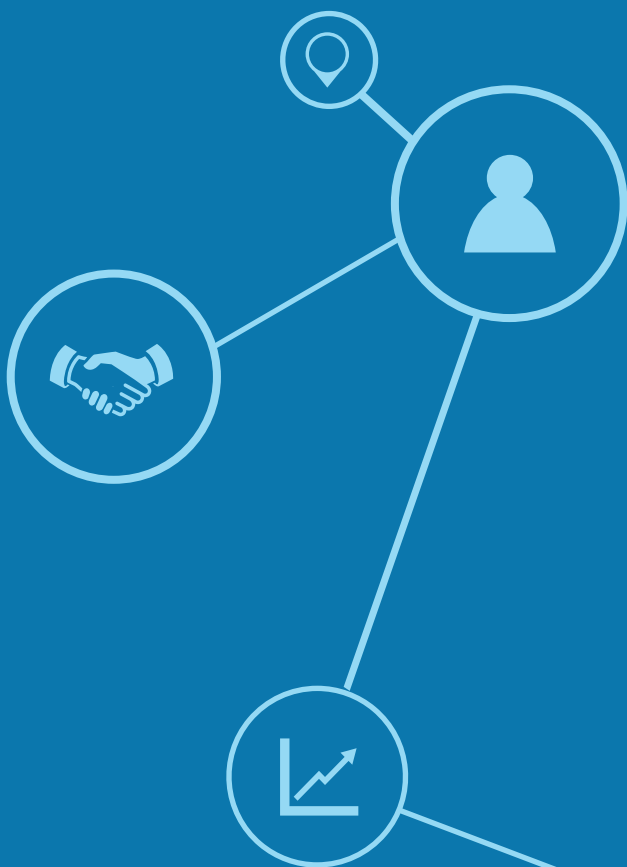
University Income 2013/2014

Funding Council	£96.8 million	38%
Tuition fees and education contracts	£76.2 million	30%
Research grants and contracts	£52.2 million	21%
Other income	£26.7 million	10%
Endowment and investment	£2.6 million	1%
Total income	£254.4 million	

Staff 2013/2014

Academic Professionals	1,390
Research and Knowledge Exchange	530
Teaching and Research / Teaching only	860
Professional Services	2,000
Total	3,390





the place of useful learning
www.strath.ac.uk
University of Strathclyde Glasgow

The University of Strathclyde is a charitable body,
registered in Scotland with registration number SC015263